

Datasheet for ABIN3001043

**anti-Endoribonuclease Dcr-1 (Dcr-1) antibody**[Go to Product page](#)**1** Image

## Overview

Quantity:	400 µL
Target:	Endoribonuclease Dcr-1 (Dcr-1)
Reactivity:	Onchocerca
Host:	Rabbit
Clonality:	Polyclonal
Conjugate:	Un-conjugated
Application:	Western Blotting (WB)

## Product Details

Immunogen:	CAEEL.
Isotype:	IgG
Purification:	This antibody is purified through a protein G column, eluted with high and low pH buffers and neutralized immediately, followed by dialysis against PBS.

## Target Details

Target:	Endoribonuclease Dcr-1 (Dcr-1)
Alternative Name:	Dcr-1 ( <a href="#">Dcr-1 Products</a> )
UniProt:	<a href="#">P34529</a>

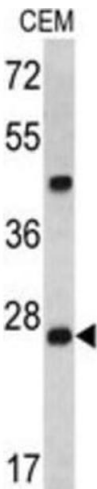
Application Details

Application Notes:	Optimal working dilution should be determined by the investigator.
Restrictions:	For Research Use only

Handling

Format:	Liquid
Buffer:	PBS with 0.09 % (W/V) sodium azide.
Preservative:	Sodium azide
Precaution of Use:	This product contains Sodium azide: a POISONOUS AND HAZARDOUS SUBSTANCE which should be handled by trained staff only.
Storage:	-20 °C
Storage Comment:	Aliquot and store at -20 °C. Avoid repeated freeze/thaw cycles.

Images



Western Blotting

Image 1.