

Datasheet for ABIN3001323

anti-CCBP2 antibody**2** Images[Go to Product page](#)

Overview

| | |
|--------------|---|
| Quantity: | 400 µL |
| Target: | CCBP2 |
| Reactivity: | Human, Mouse |
| Host: | Rabbit |
| Clonality: | Polyclonal |
| Conjugate: | This CCBP2 antibody is un-conjugated |
| Application: | Western Blotting (WB), Immunohistochemistry (IHC) |

Product Details

| | |
|---------------|--|
| Immunogen: | Human Chemokine Receptor D6. |
| Isotype: | IgG |
| Purification: | This antibody is purified through a protein G column, eluted with high and low pH buffers and neutralized immediately, followed by dialysis against PBS. |

Target Details

| | |
|-------------------|--|
| Target: | CCBP2 |
| Alternative Name: | Chemokine Receptor D6 (CCBP2 Products) |
| UniProt: | O00590 |

Application Details

Application Notes: Optimal working dilution should be determined by the investigator.

Restrictions: For Research Use only

Handling

Format: Liquid

Buffer: PBS with 0.09 % (W/V) sodium azide.

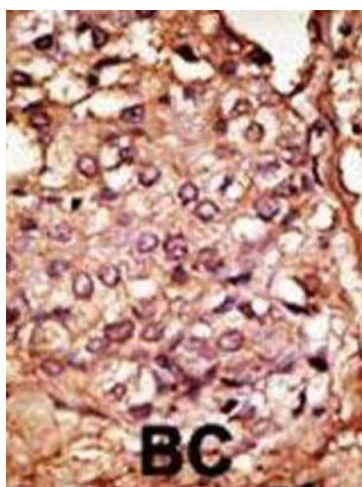
Preservative: Sodium azide

Precaution of Use: This product contains Sodium azide: a POISONOUS AND HAZARDOUS SUBSTANCE which should be handled by trained staff only.

Storage: -20 °C

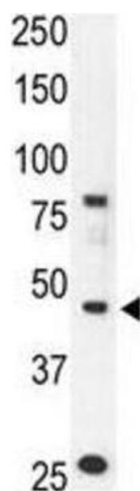
Storage Comment: Aliquot and store at -20 °C. Avoid repeated freeze/thaw cycles.

Images



Immunohistochemistry

Image 1.



Western Blotting

Image 2.