



[Go to Product page](#)

Datasheet for ABIN3002233

## anti-PAPD4 antibody

### 2 Images

#### Overview

Quantity:	400 µL
Target:	PAPD4
Reactivity:	Human, Mouse, Hamster
Host:	Rabbit
Clonality:	Polyclonal
Conjugate:	This PAPD4 antibody is un-conjugated
Application:	Western Blotting (WB), Immunohistochemistry (IHC), Immunofluorescence (fixed cells) (IF/ICC)

#### Product Details

Immunogen:	Human GLD2.
Isotype:	IgG
Purification:	This antibody is purified through a protein A column, followed by peptide affinity purification.

#### Target Details

Target:	PAPD4
Alternative Name:	GLD2 ( <a href="#">PAPD4 Products</a> )
UniProt:	<a href="#">Q6PIY7</a>

#### Application Details

Application Notes:	Optimal working dilution should be determined by the investigator.
--------------------	--

## Application Details

Restrictions: For Research Use only

## Handling

Format: Liquid

Buffer: PBS with 0.09 % (W/V) sodium azide.

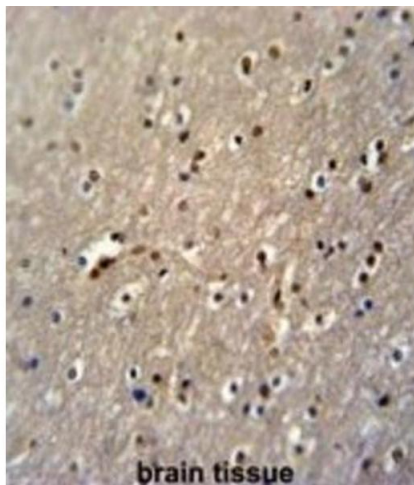
Preservative: Sodium azide

Precaution of Use: This product contains Sodium azide: a POISONOUS AND HAZARDOUS SUBSTANCE which should be handled by trained staff only.

Storage: -20 °C

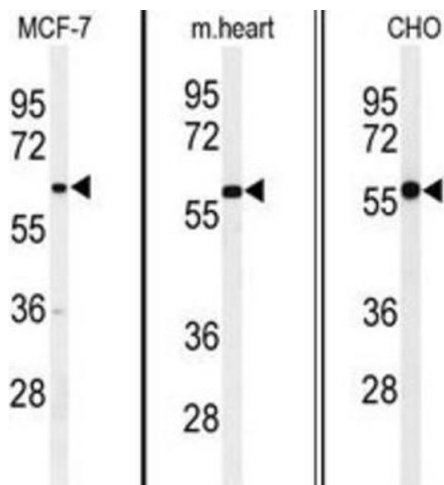
Storage Comment: Aliquot and store at -20 °C. Avoid repeated freeze/thaw cycles.

## Images



### Immunohistochemistry

Image 1.



### Western Blotting

Image 2.