

Datasheet for ABIN3002635

**anti-Parkin antibody****3** Images[Go to Product page](#)

## Overview

Quantity:	400 µL
Target:	Parkin (PARK2)
Reactivity:	Human
Host:	Rabbit
Clonality:	Polyclonal
Conjugate:	This Parkin antibody is un-conjugated
Application:	Western Blotting (WB), Immunohistochemistry (IHC), Flow Cytometry (FACS), Immunofluorescence (fixed cells) (IF/ICC)

## Product Details

Immunogen:	Human Parkin.
Isotype:	IgG
Purification:	This antibody is prepared by Saturated Ammonium Sulfate (SAS) precipitation followed by dialysis against PBS.

## Target Details

Target:	Parkin (PARK2)
Alternative Name:	Parkin ( <a href="#">PARK2 Products</a> )
UniProt:	<a href="#">O60260</a>
Pathways:	<a href="#">Autophagy, Ubiquitin Proteasome Pathway</a>

## Application Details

---

Application Notes: Optimal working dilution should be determined by the investigator.

Restrictions: For Research Use only

## Handling

---

Format: Liquid

Buffer: PBS with 0.09 % (W/V) sodium azide.

Preservative: Sodium azide

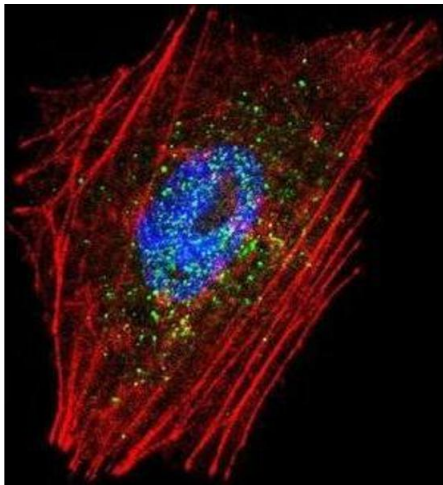
Precaution of Use: This product contains Sodium azide: a POISONOUS AND HAZARDOUS SUBSTANCE which should be handled by trained staff only.

Storage: -20 °C

Storage Comment: Aliquot and store at -20 °C. Avoid repeated freeze/thaw cycles.

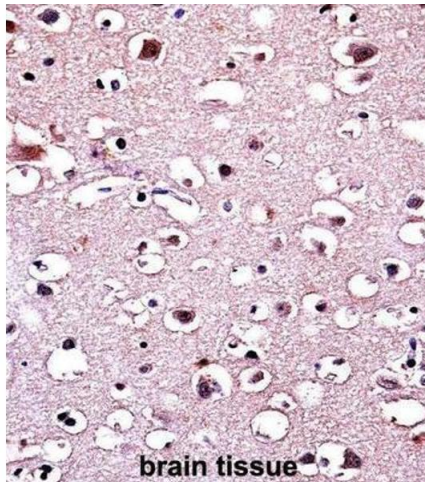
## Images

---



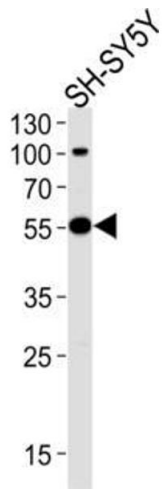
### Immunofluorescence

Image 1.



### Immunohistochemistry

Image 2.



### Western Blotting

Image 3.