

Datasheet for ABIN3002670  
**anti-Actin, gamma 1 antibody**

## 3 Images

[Go to Product page](#)

## Overview

Quantity:	400 µL
Target:	Actin, gamma 1 (ACTG1)
Reactivity:	Human
Host:	Rabbit
Clonality:	Polyclonal
Conjugate:	This Actin, gamma 1 antibody is un-conjugated
Application:	Western Blotting (WB), Flow Cytometry (FACS), Immunofluorescence (fixed cells) (IF/ICC)

## Product Details

Immunogen:	Human ACTG1.
Isotype:	IgG
Purification:	This antibody is prepared by Saturated Ammonium Sulfate (SAS) precipitation followed by dialysis against PBS.

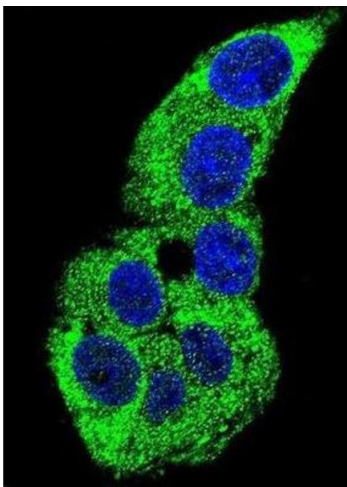
## Target Details

Target:	Actin, gamma 1 (ACTG1)
Alternative Name:	ACTG1 ( <a href="#">ACTG1 Products</a> )
UniProt:	<a href="#">P63261</a>
Pathways:	<a href="#">Myometrial Relaxation and Contraction</a> , <a href="#">Cell-Cell Junction Organization</a>

# Application Details

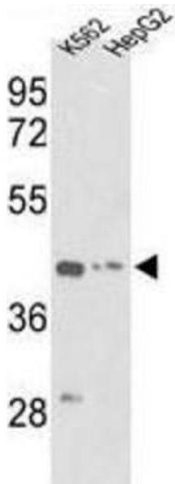
Application Notes:	Optimal working dilution should be determined by the investigator.
Restrictions:	For Research Use only
Handling	
Format:	Liquid
Buffer:	PBS with 0.09 % (W/V) sodium azide.
Preservative:	Sodium azide
Precaution of Use:	This product contains Sodium azide: a POISONOUS AND HAZARDOUS SUBSTANCE which should be handled by trained staff only.
Storage:	-20 °C
Storage Comment:	Aliquot and store at -20 °C. Avoid repeated freeze/thaw cycles.

# Images



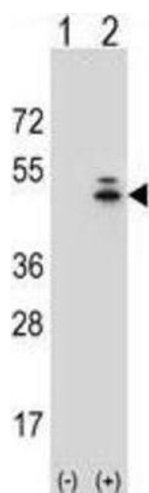
Immunofluorescence

Image 1.



Western Blotting

Image 2.



Western Blotting

Image 3.