

Datasheet for ABIN3002690  
**anti-Endonuclease G antibody**



[Go to Product page](#)

2 Images

## Overview

Quantity:	400 µL
Target:	Endonuclease G (ENDOG)
Reactivity:	Human, Mouse
Host:	Rabbit
Clonality:	Polyclonal
Conjugate:	This Endonuclease G antibody is un-conjugated
Application:	Western Blotting (WB), Flow Cytometry (FACS)

## Product Details

Immunogen:	Human ENDOG.
Isotype:	IgG
Purification:	This antibody is prepared by Saturated Ammonium Sulfate (SAS) precipitation followed by dialysis against PBS.

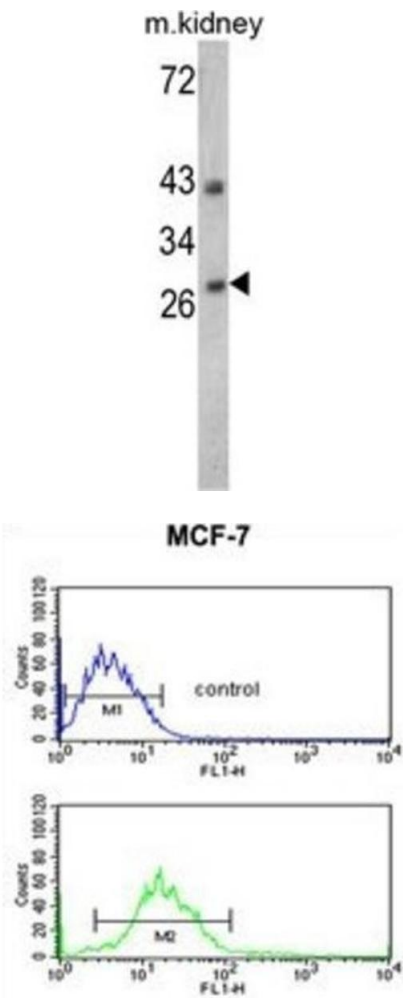
## Target Details

Target:	Endonuclease G (ENDOG)
Alternative Name:	ENDOG ( <a href="#">ENDOG Products</a> )
UniProt:	<a href="#">Q14249</a>
Pathways:	<a href="#">Apoptosis</a>

Application Details

Application Notes:	Optimal working dilution should be determined by the investigator.
Restrictions:	For Research Use only
Handling	
Format:	Liquid
Buffer:	PBS with 0.09 % (W/V) sodium azide.
Preservative:	Sodium azide
Precaution of Use:	This product contains Sodium azide: a POISONOUS AND HAZARDOUS SUBSTANCE which should be handled by trained staff only.
Storage:	-20 °C
Storage Comment:	Aliquot and store at -20 °C. Avoid repeated freeze/thaw cycles.

Images



Western Blotting

Image 1.

Flow Cytometry

Image 2.