



Datasheet for ABIN3002711  
**anti-CCRN4L antibody**



[Go to Product page](#)

3 Images

### Overview

Quantity:	400 µL
Target:	CCRN4L
Reactivity:	Human
Host:	Rabbit
Clonality:	Polyclonal
Conjugate:	This CCRN4L antibody is un-conjugated
Application:	Western Blotting (WB), Immunohistochemistry (IHC), Flow Cytometry (FACS)

### Product Details

Immunogen:	Human CCRN4L.
Isotype:	IgG
Purification:	This antibody is prepared by Saturated Ammonium Sulfate (SAS) precipitation followed by dialysis against PBS.

### Target Details

Target:	CCRN4L
Alternative Name:	CCRN4L ( <a href="#">CCRN4L Products</a> )
UniProt:	<a href="#">Q9UK39</a>
Pathways:	<a href="#">Ribonucleoprotein Complex Subunit Organization</a>

## Application Details

Application Notes: Optimal working dilution should be determined by the investigator.

Restrictions: For Research Use only

## Handling

Format: Liquid

Buffer: PBS with 0.09 % (W/V) sodium azide.

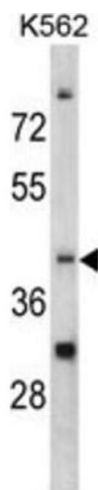
Preservative: Sodium azide

Precaution of Use: This product contains Sodium azide: a POISONOUS AND HAZARDOUS SUBSTANCE which should be handled by trained staff only.

Storage: -20 °C

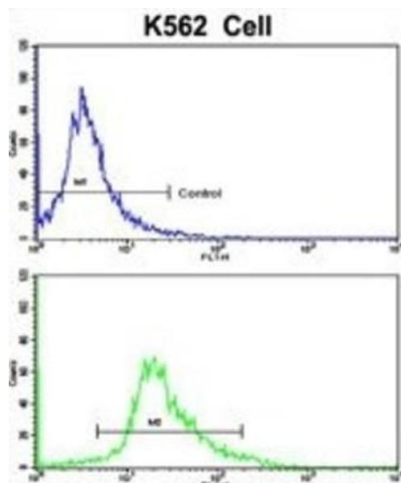
Storage Comment: Aliquot and store at -20 °C. Avoid repeated freeze/thaw cycles.

## Images



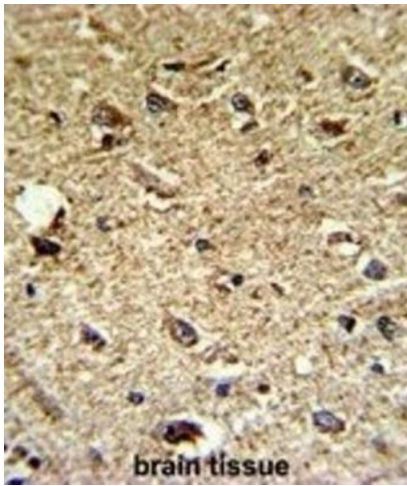
### Western Blotting

Image 1.



### Flow Cytometry

Image 2.



### Immunohistochemistry

Image 3.