



[Go to Product page](#)

Datasheet for ABIN3002771  
**anti-MAML3 antibody**

3 Images

### Overview

Quantity:	400 µL
Target:	MAML3
Reactivity:	Human
Host:	Rabbit
Clonality:	Polyclonal
Application:	Flow Cytometry (FACS), Western Blotting (WB), Immunohistochemistry (IHC)

### Product Details

Immunogen:	Human MAML3.
Isotype:	IgG
Purification:	This antibody is prepared by Saturated Ammonium Sulfate (SAS) precipitation followed by dialysis against PBS.

### Target Details

Target:	MAML3
Alternative Name:	MAML3 ( <a href="#">MAML3 Products</a> )
UniProt:	<a href="#">Q96JK9</a>

### Application Details

Application Notes:	Optimal working dilution should be determined by the investigator.
--------------------	--

## Application Details

Restrictions: For Research Use only

## Handling

Format: Liquid

Buffer: PBS with 0.09 % (W/V) sodium azide.

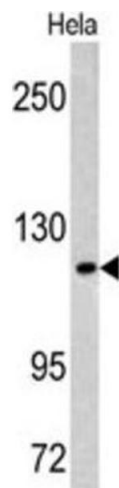
Preservative: Sodium azide

Precaution of Use: This product contains Sodium azide: a POISONOUS AND HAZARDOUS SUBSTANCE which should be handled by trained staff only.

Storage: -20 °C

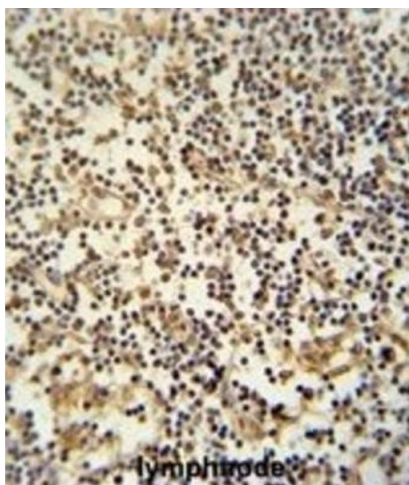
Storage Comment: Aliquot and store at -20 °C. Avoid repeated freeze/thaw cycles.

## Images



### Western Blotting

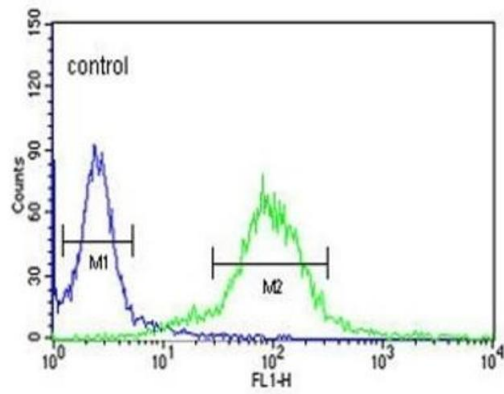
Image 1.



### Immunohistochemistry

Image 2.

## Hela



### Flow Cytometry

Image 3.