

Datasheet for ABIN3002873  
**anti-EPS8-Like 3 antibody**[Go to Product page](#)

## 3 Images

## Overview

Quantity:	400 µL
Target:	EPS8-Like 3 (EPS8L3)
Reactivity:	Human
Host:	Rabbit
Clonality:	Polyclonal
Conjugate:	This EPS8-Like 3 antibody is un-conjugated
Application:	Western Blotting (WB), Immunohistochemistry (IHC), Flow Cytometry (FACS)

## Product Details

Immunogen:	Human EPS8L3.
Isotype:	IgG
Purification:	This antibody is purified through a protein A column, followed by peptide affinity purification.

## Target Details

Target:	EPS8-Like 3 (EPS8L3)
Alternative Name:	EPS8L3 ( <a href="#">EPS8L3 Products</a> )
UniProt:	<a href="#">Q8TE67</a>

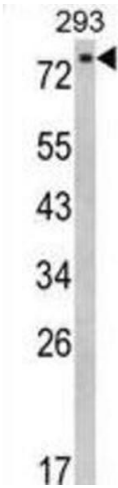
## Application Details

Application Notes:	Optimal working dilution should be determined by the investigator.
--------------------	--------------------------------------------------------------------

## Application Details

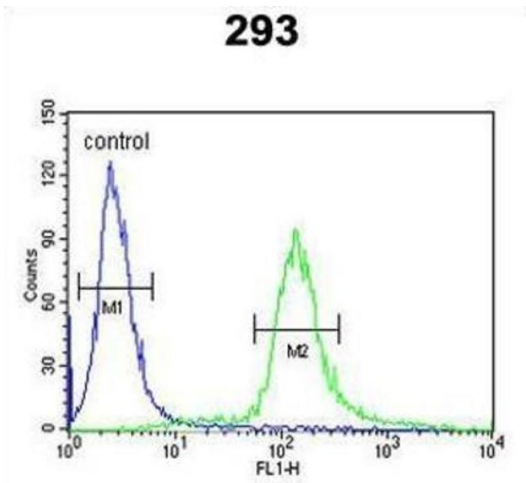
Restrictions:	For Research Use only
Handling	
Format:	Liquid
Buffer:	PBS with 0.09 % (W/V) sodium azide.
Preservative:	Sodium azide
Precaution of Use:	This product contains Sodium azide: a POISONOUS AND HAZARDOUS SUBSTANCE which should be handled by trained staff only.
Storage:	-20 °C
Storage Comment:	Aliquot and store at -20 °C. Avoid repeated freeze/thaw cycles.

## Images



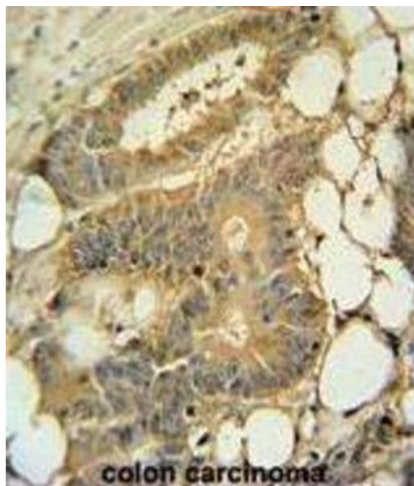
### Western Blotting

Image 1.



### Flow Cytometry

Image 2.



### Immunohistochemistry

Image 3.