

Datasheet for ABIN3003171  
**anti-Tyrosinase-Related Protein 1 antibody**

3 Images

[Go to Product page](#)

## Overview

|              |  |
|--------------|--|
| Quantity:    | 400 µL   |
| Target:      | Tyrosinase-Related Protein 1 (TYRP1)                                     |
| Reactivity:  | Human  |
| Host:        | Rabbit   |
| Clonality:   | Polyclonal   |
| Conjugate:   | This Tyrosinase-Related Protein 1 antibody is un-conjugated              |
| Application: | Flow Cytometry (FACS), Western Blotting (WB), Immunohistochemistry (IHC) |

## Product Details

|               |  |
|---------------|--|
| Immunogen:    | Human CATB.  |
| Isotype:      | IgG  |
| Purification: | This antibody is purified through a protein A column, followed by peptide affinity purification. |

## Target Details

|                   |   |
|-------------------|---|
| Target:           | Tyrosinase-Related Protein 1 (TYRP1)    |
| Alternative Name: | CATB ( <a href="#">TYRP1 Products</a> ) |
| UniProt:          | <a href="#">P07858</a>                  |

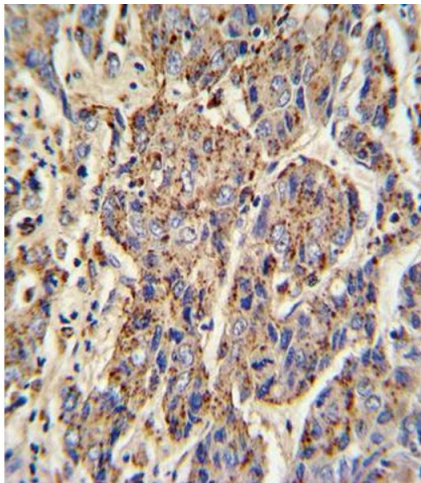
## Application Details

|                    |  |
|--------------------|--|
| Application Notes: | Optimal working dilution should be determined by the investigator. |
|--------------------|--|

## Application Details

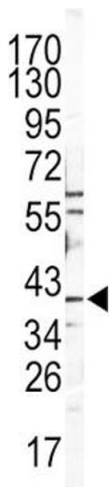
|                    |  |
|--------------------|--|
| Restrictions:      | For Research Use only  |
| Handling           |  |
| Format:            | Liquid   |
| Buffer:            | PBS with 0.09 % (W/V) sodium azide.  |
| Preservative:      | Sodium azide   |
| Precaution of Use: | This product contains Sodium azide: a POISONOUS AND HAZARDOUS SUBSTANCE which should be handled by trained staff only. |
| Storage:           | -20 °C   |
| Storage Comment:   | Aliquot and store at -20 °C. Avoid repeated freeze/thaw cycles.  |

## Images



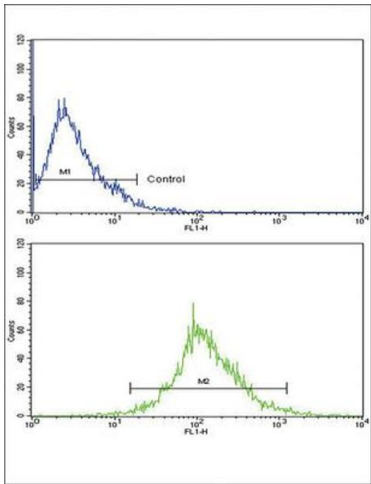
### Immunohistochemistry

Image 1.



### Western Blotting

Image 2.



Flow Cytometry

Image 3.