

Datasheet for ABIN3003224  
**anti-EN2 antibody**



[Go to Product page](#)

3 Images

### Overview

Quantity:	400 µL
Target:	EN2
Reactivity:	Human
Host:	Rabbit
Clonality:	Polyclonal
Application:	Western Blotting (WB), Immunohistochemistry (IHC), Flow Cytometry (FACS)

### Product Details

Immunogen:	Human EN2.
Isotype:	IgG
Purification:	This antibody is purified through a protein A column, followed by peptide affinity purification.

### Target Details

Target:	EN2
Alternative Name:	EN2 ( <a href="#">EN2 Products</a> )
UniProt:	<a href="#">P19622</a>

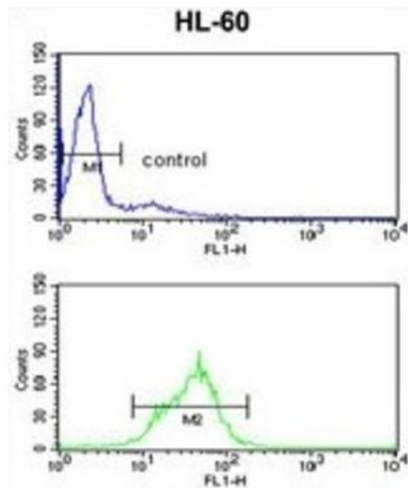
### Application Details

Application Notes:	Optimal working dilution should be determined by the investigator.
Restrictions:	For Research Use only

## Handling

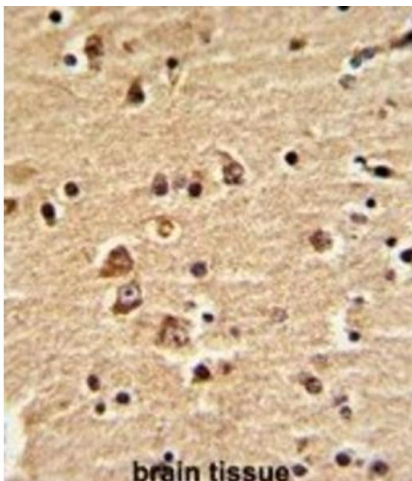
Format:	Liquid
Buffer:	PBS with 0.09 % (W/V) sodium azide.
Preservative:	Sodium azide
Precaution of Use:	This product contains Sodium azide: a POISONOUS AND HAZARDOUS SUBSTANCE which should be handled by trained staff only.
Storage:	-20 °C
Storage Comment:	Aliquot and store at -20 °C. Avoid repeated freeze/thaw cycles.

## Images



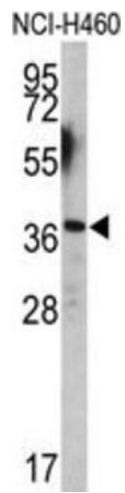
### Flow Cytometry

Image 1.



### Immunohistochemistry

Image 2.



### Western Blotting

Image 3.