

Datasheet for ABIN3003279

anti-Nemo-Like Kinase antibody (Thr286)**3** Images[Go to Product page](#)

Overview

Quantity:	400 µL
Target:	Nemo-Like Kinase (NLK)
Binding Specificity:	Thr286
Reactivity:	Human
Host:	Rabbit
Clonality:	Polyclonal
Conjugate:	This Nemo-Like Kinase antibody is un-conjugated
Application:	Western Blotting (WB), Flow Cytometry (FACS), Immunofluorescence (fixed cells) (IF/ICC)

Product Details

Immunogen:	Human NLK-T286.
Isotype:	IgG
Purification:	This antibody is purified through a protein A column, followed by peptide affinity purification.

Target Details

Target:	Nemo-Like Kinase (NLK)
Alternative Name:	NLK-T286 (NLK Products)
UniProt:	Q9UBE8
Pathways:	Ubiquitin Proteasome Pathway

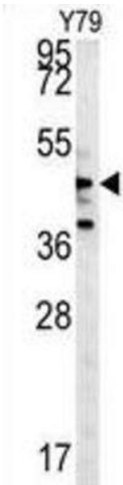
Application Details

Application Notes:	Optimal working dilution should be determined by the investigator.
Restrictions:	For Research Use only

Handling

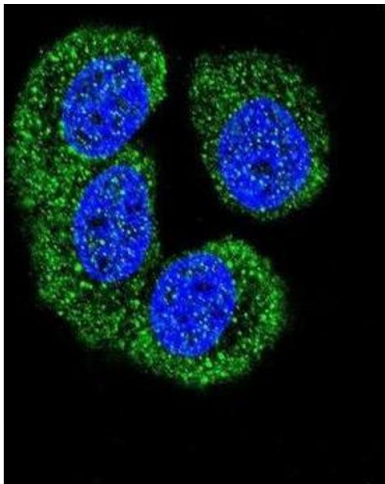
Format:	Liquid
Buffer:	PBS with 0.09 % (W/V) sodium azide.
Preservative:	Sodium azide
Precaution of Use:	This product contains Sodium azide: a POISONOUS AND HAZARDOUS SUBSTANCE which should be handled by trained staff only.
Storage:	-20 °C
Storage Comment:	Aliquot and store at -20 °C. Avoid repeated freeze/thaw cycles.

Images



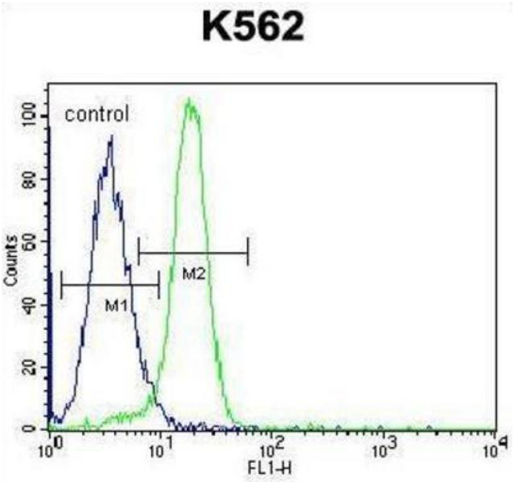
Western Blotting

Image 1.



Immunofluorescence

Image 2.



Flow Cytometry

Image 3.