

Datasheet for ABIN3003507

**anti-SNRPE antibody****3** Images[Go to Product page](#)

## Overview

Quantity:	400 µL
Target:	SNRPE
Reactivity:	Human
Host:	Rabbit
Clonality:	Polyclonal
Conjugate:	This SNRPE antibody is un-conjugated
Application:	Western Blotting (WB), Immunohistochemistry (IHC), Immunofluorescence (fixed cells) (IF/ICC), Flow Cytometry (FACS)

## Product Details

Immunogen:	Human B-RAF.
Isotype:	IgG
Purification:	This antibody is purified through a protein A column, eluted with high and low pH buffers and neutralized immediately, followed by dialysis against PBS.

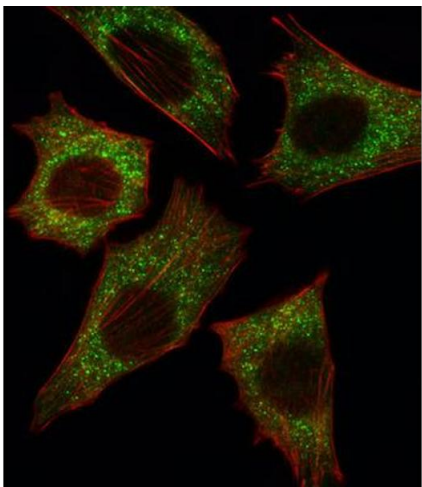
## Target Details

Target:	SNRPE
Alternative Name:	B-RAF ( <a href="#">SNRPE Products</a> )
UniProt:	<a href="#">P15056</a>
Pathways:	<a href="#">Ribonucleoprotein Complex Subunit Organization</a> , <a href="#">Hepatitis C</a>

## Application Details

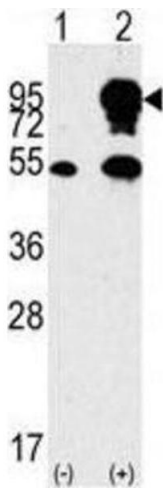
Application Notes:	Optimal working dilution should be determined by the investigator.
Restrictions:	For Research Use only
Handling	
Format:	Liquid
Buffer:	PBS with 0.09 % (W/V) sodium azide.
Preservative:	Sodium azide
Precaution of Use:	This product contains Sodium azide: a POISONOUS AND HAZARDOUS SUBSTANCE which should be handled by trained staff only.
Storage:	-20 °C
Storage Comment:	Aliquot and store at -20 °C. Avoid repeated freeze/thaw cycles.

## Images



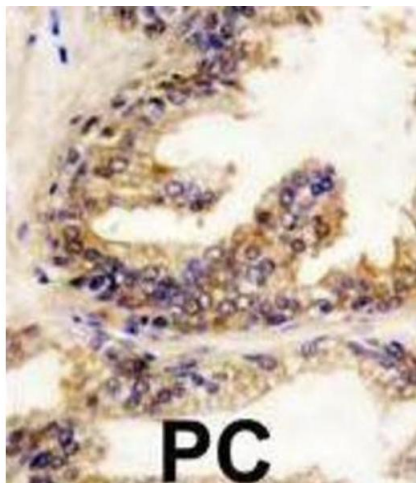
### Immunofluorescence

Image 1.



### Western Blotting

Image 2.



#### Immunohistochemistry

Image 3.