



[Go to Product page](#)

Datasheet for ABIN3003807

## anti-SREBF chaperone antibody

### 3 Images

#### Overview

Quantity:	400 µL
Target:	SREBF chaperone (SCAP)
Reactivity:	Human
Host:	Rabbit
Clonality:	Polyclonal
Conjugate:	This SREBF chaperone antibody is un-conjugated
Application:	Western Blotting (WB), Immunohistochemistry (IHC), Flow Cytometry (FACS), Immunofluorescence (fixed cells) (IF/ICC)

#### Product Details

Immunogen:	Human SCAP.
Isotype:	IgG
Purification:	This antibody is purified through a protein A column, followed by peptide affinity purification.

#### Target Details

Target:	SREBF chaperone (SCAP)
Alternative Name:	SCAP ( <a href="#">SCAP Products</a> )
UniProt:	<a href="#">Q12770</a>
Pathways:	<a href="#">SARS-CoV-2 Protein Interactome</a>

## Application Details

Application Notes: Optimal working dilution should be determined by the investigator.

Restrictions: For Research Use only

## Handling

Format: Liquid

Buffer: PBS with 0.09 % (W/V) sodium azide.

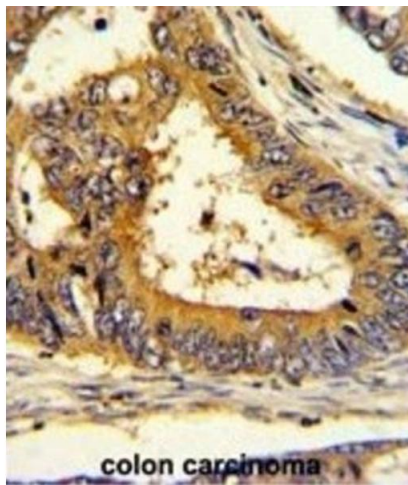
Preservative: Sodium azide

Precaution of Use: This product contains Sodium azide: a POISONOUS AND HAZARDOUS SUBSTANCE which should be handled by trained staff only.

Storage: -20 °C

Storage Comment: Aliquot and store at -20 °C. Avoid repeated freeze/thaw cycles.

## Images



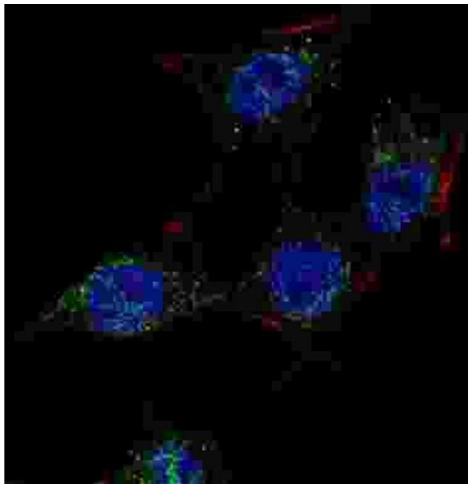
### Immunohistochemistry

Image 1.



### Western Blotting

Image 2.



**Immunofluorescence**

**Image 3.**