



Datasheet for ABIN3003869

## anti-NCF1C antibody



[Go to Product page](#)

### 3 Images

#### Overview

Quantity:	400 µL
Target:	NCF1C
Reactivity:	Human
Host:	Rabbit
Clonality:	Polyclonal
Application:	Western Blotting (WB), Flow Cytometry (FACS), Immunohistochemistry (IHC)

#### Product Details

Immunogen:	Human NCF1C.
Isotype:	IgG
Purification:	This antibody is purified through a protein A column, followed by peptide affinity purification.

#### Target Details

Target:	NCF1C
Alternative Name:	NCF1C ( <a href="#">NCF1C Products</a> )
UniProt:	<a href="#">A8MVU1</a>

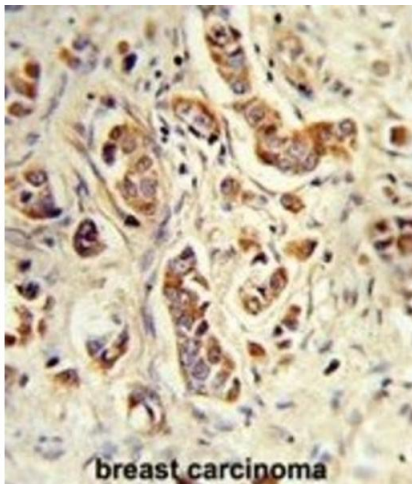
#### Application Details

Application Notes:	Optimal working dilution should be determined by the investigator.
Restrictions:	For Research Use only

## Handling

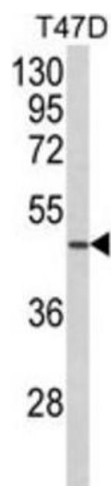
Format:	Liquid
Buffer:	PBS with 0.09 % (W/V) sodium azide.
Preservative:	Sodium azide
Precaution of Use:	This product contains Sodium azide: a POISONOUS AND HAZARDOUS SUBSTANCE which should be handled by trained staff only.
Storage:	-20 °C
Storage Comment:	Aliquot and store at -20 °C. Avoid repeated freeze/thaw cycles.

## Images



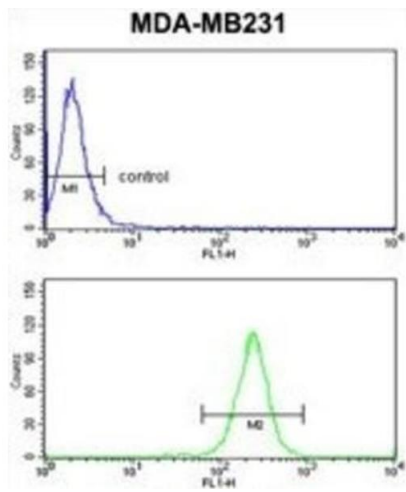
### Immunohistochemistry

Image 1.



### Western Blotting

Image 2.



Flow Cytometry

Image 3.