

Datasheet for ABIN3003903  
**anti-Importin 11 antibody**



[Go to Product page](#)

3 Images

### Overview

Quantity:	400 µL
Target:	Importin 11 (IPO11)
Reactivity:	Human
Host:	Rabbit
Clonality:	Polyclonal
Application:	Western Blotting (WB), Immunohistochemistry (IHC), Flow Cytometry (FACS)

### Product Details

Immunogen:	Human IPO11.
Isotype:	IgG
Purification:	This antibody is purified through a protein A column, followed by peptide affinity purification.

### Target Details

Target:	Importin 11 (IPO11)
Alternative Name:	IPO11 ( <a href="#">IPO11 Products</a> )
UniProt:	<a href="#">Q9UI26</a>
Pathways:	<a href="#">Protein targeting to Nucleus</a>

### Application Details

Application Notes:	Optimal working dilution should be determined by the investigator.
--------------------	--

## Application Details

Restrictions: For Research Use only

## Handling

Format: Liquid

Buffer: PBS with 0.09 % (W/V) sodium azide.

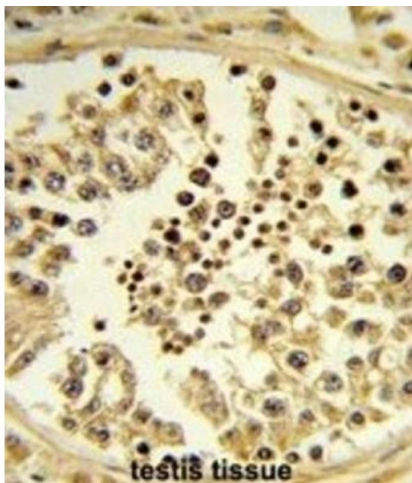
Preservative: Sodium azide

Precaution of Use: This product contains Sodium azide: a POISONOUS AND HAZARDOUS SUBSTANCE which should be handled by trained staff only.

Storage: -20 °C

Storage Comment: Aliquot and store at -20 °C. Avoid repeated freeze/thaw cycles.

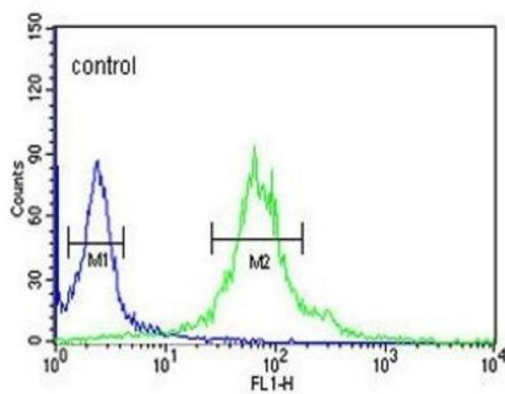
## Images



### Immunohistochemistry

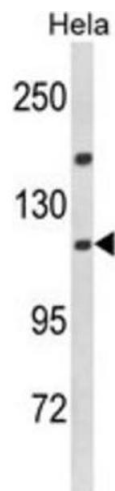
Image 1.

### Hela



### Flow Cytometry

Image 2.



### Western Blotting

Image 3.