



[Go to Product page](#)

Datasheet for ABIN3003907

## anti-CTPS2 antibody

### 2 Images

#### Overview

Quantity:	400 µL
Target:	CTPS2
Reactivity:	Human
Host:	Rabbit
Clonality:	Polyclonal
Conjugate:	This CTPS2 antibody is un-conjugated
Application:	Western Blotting (WB), Flow Cytometry (FACS)

#### Product Details

Immunogen:	Human CTPS2.
Isotype:	IgG
Purification:	This antibody is purified through a protein A column, followed by peptide affinity purification.

#### Target Details

Target:	CTPS2
Alternative Name:	CTPS2 ( <a href="#">CTPS2 Products</a> )
UniProt:	<a href="#">Q9NRF8</a>
Pathways:	<a href="#">Ribonucleoside Biosynthetic Process</a>

## Application Details

Application Notes: Optimal working dilution should be determined by the investigator.

Restrictions: For Research Use only

## Handling

Format: Liquid

Buffer: PBS with 0.09 % (W/V) sodium azide.

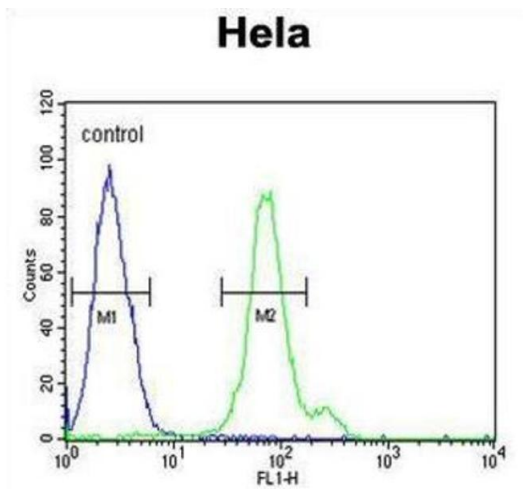
Preservative: Sodium azide

Precaution of Use: This product contains Sodium azide: a POISONOUS AND HAZARDOUS SUBSTANCE which should be handled by trained staff only.

Storage: -20 °C

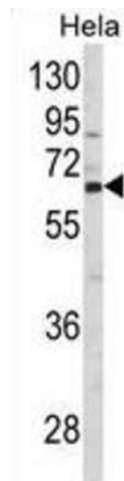
Storage Comment: Aliquot and store at -20 °C. Avoid repeated freeze/thaw cycles.

## Images



### Flow Cytometry

Image 1.



### Western Blotting

Image 2.