



[Go to Product page](#)

Datasheet for ABIN3003942
anti-RPGRIP1 antibody

3 Images

Overview

| | |
|--------------|--|
| Quantity: | 400 µL |
| Target: | RPGRIP1 |
| Reactivity: | Human |
| Host: | Rabbit |
| Clonality: | Polyclonal |
| Conjugate: | This RPGRIP1 antibody is un-conjugated |
| Application: | Western Blotting (WB), Immunohistochemistry (IHC), Flow Cytometry (FACS) |

Product Details

| | |
|---------------|--|
| Immunogen: | Human RPGRIP1. |
| Isotype: | IgG |
| Purification: | This antibody is purified through a protein A column, followed by peptide affinity purification. |

Target Details

| | |
|-------------------|--|
| Target: | RPGRIP1 |
| Alternative Name: | RPGRIP1 (RPGRIP1 Products) |
| UniProt: | Q96KN7 |

Application Details

| | |
|--------------------|--|
| Application Notes: | Optimal working dilution should be determined by the investigator. |
|--------------------|--|

Application Details

Restrictions: For Research Use only

Handling

Format: Liquid

Buffer: PBS with 0.09 % (W/V) sodium azide.

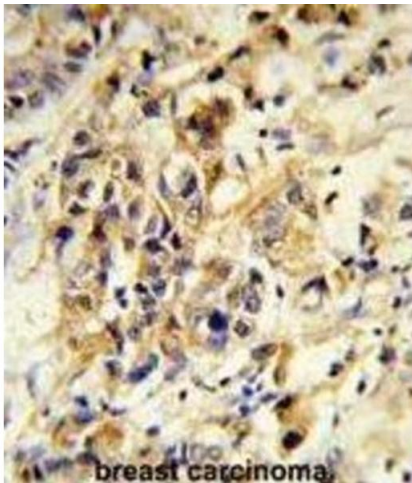
Preservative: Sodium azide

Precaution of Use: This product contains Sodium azide: a POISONOUS AND HAZARDOUS SUBSTANCE which should be handled by trained staff only.

Storage: -20 °C

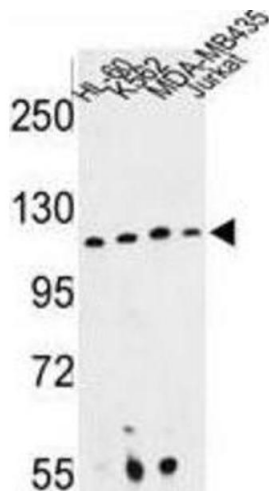
Storage Comment: Aliquot and store at -20 °C. Avoid repeated freeze/thaw cycles.

Images



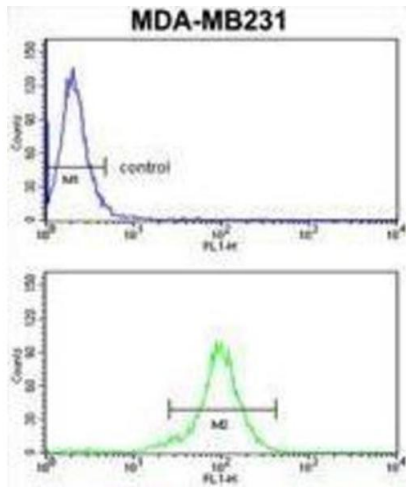
Immunohistochemistry

Image 1.



Western Blotting

Image 2.



Flow Cytometry

Image 3.