

Datasheet for ABIN3004007

anti-OR2H2 antibody**2** Images[Go to Product page](#)

Overview

Quantity:	400 µL
Target:	OR2H2
Reactivity:	Human
Host:	Rabbit
Clonality:	Polyclonal
Conjugate:	This OR2H2 antibody is un-conjugated
Application:	Western Blotting (WB), Flow Cytometry (FACS)

Product Details

Immunogen:	Human OR2H2.
Isotype:	IgG
Purification:	This antibody is purified through a protein A column, followed by peptide affinity purification.

Target Details

Target:	OR2H2
Alternative Name:	OR2H2 (OR2H2 Products)
UniProt:	O95918

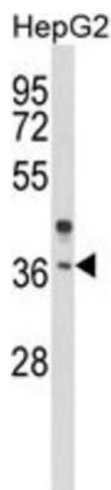
Application Details

Application Notes:	Optimal working dilution should be determined by the investigator.
--------------------	--

Application Details

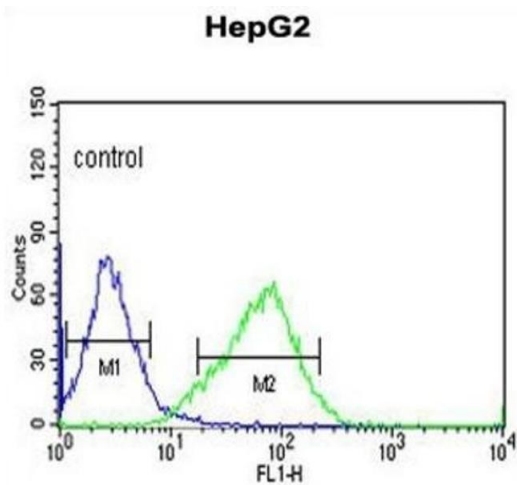
Restrictions:	For Research Use only
Handling	
Format:	Liquid
Buffer:	PBS with 0.09 % (W/V) sodium azide.
Preservative:	Sodium azide
Precaution of Use:	This product contains Sodium azide: a POISONOUS AND HAZARDOUS SUBSTANCE which should be handled by trained staff only.
Storage:	-20 °C
Storage Comment:	Aliquot and store at -20 °C. Avoid repeated freeze/thaw cycles.

Images



Western Blotting

Image 1.



Flow Cytometry

Image 2.