



Datasheet for ABIN3004613  
**anti-RPLP0P6 antibody**



[Go to Product page](#)

1 Image

### Overview

Quantity:	400 µL
Target:	RPLP0P6
Reactivity:	Human
Host:	Rabbit
Clonality:	Polyclonal
Application:	Western Blotting (WB), Immunohistochemistry (IHC), Immunofluorescence (fixed cells) (IF/ICC)

### Product Details

Isotype:	IgG
Purification:	This antibody is purified through a protein A column, followed by peptide affinity purification.

### Target Details

Target:	RPLP0P6
Alternative Name:	RPLP0P6 ( <a href="#">RPLP0P6 Products</a> )
UniProt:	<a href="#">Q8NHW5</a>

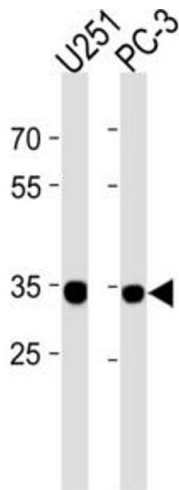
### Application Details

Application Notes:	Optimal working dilution should be determined by the investigator.
Restrictions:	For Research Use only

## Handling

Format:	Liquid
Buffer:	PBS with 0.09 % (W/V) sodium azide.
Preservative:	Sodium azide
Precaution of Use:	This product contains Sodium azide: a POISONOUS AND HAZARDOUS SUBSTANCE which should be handled by trained staff only.
Storage:	-20 °C
Storage Comment:	Aliquot and store at -20 °C. Avoid repeated freeze/thaw cycles.

## Images



### Western Blotting

Image 1.