

Datasheet for ABIN3004732

## anti-POLR2C antibody



[Go to Product page](#)

### 1 Image

#### Overview

|              |  |
|--------------|--|
| Quantity:    | 400 µL   |
| Target:      | POLR2C   |
| Reactivity:  | Human, Mouse   |
| Host:        | Rabbit   |
| Clonality:   | Polyclonal   |
| Application: | Western Blotting (WB), Immunofluorescence (fixed cells) (IF/ICC) |

#### Product Details

|               |  |
|---------------|--|
| Immunogen:    | Human POLR2C.  |
| Isotype:      | IgG  |
| Purification: | This antibody is purified through a protein A column, followed by peptide affinity purification. |

#### Target Details

|                   |  |
|-------------------|--|
| Target:           | POLR2C                                     |
| Alternative Name: | POLR2C ( <a href="#">POLR2C Products</a> ) |
| UniProt:          | <a href="#">P19387</a>                     |
| Pathways:         | <a href="#">Regulatory RNA Pathways</a>    |

#### Application Details

|                    |  |
|--------------------|--|
| Application Notes: | Optimal working dilution should be determined by the investigator. |
|--------------------|--|

## Application Details

Restrictions: For Research Use only

## Handling

Format: Liquid

Buffer: PBS with 0.09 % (W/V) sodium azide.

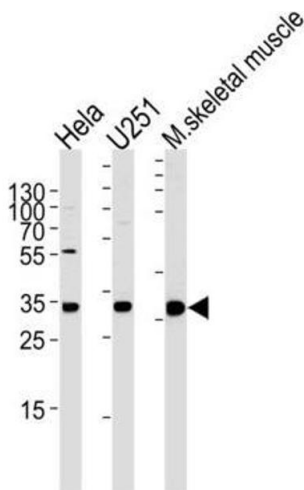
Preservative: Sodium azide

Precaution of Use: This product contains Sodium azide: a POISONOUS AND HAZARDOUS SUBSTANCE which should be handled by trained staff only.

Storage: -20 °C

Storage Comment: Aliquot and store at -20 °C. Avoid repeated freeze/thaw cycles.

## Images



### Western Blotting

Image 1.