

Datasheet for ABIN3004753
anti-EPM2AIP1 antibody



[Go to Product page](#)

1 Image

Overview

Quantity:	400 µL
Target:	EPM2AIP1
Reactivity:	Human, Mouse
Host:	Rabbit
Clonality:	Polyclonal
Conjugate:	This EPM2AIP1 antibody is un-conjugated
Application:	Western Blotting (WB)

Product Details

Immunogen:	Human EPM2AIP1.
Isotype:	IgG
Purification:	This antibody is purified through a protein A column, followed by peptide affinity purification.

Target Details

Target:	EPM2AIP1
Alternative Name:	EPM2AIP1 (EPM2AIP1 Products)
UniProt:	Q7L775

Application Details

Application Notes:	Optimal working dilution should be determined by the investigator.
--------------------	--

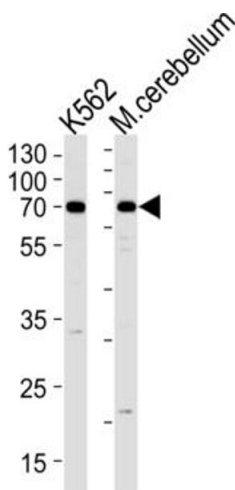
Application Details

Restrictions:	For Research Use only
---------------	-----------------------

Handling

Format:	Liquid
Buffer:	PBS with 0.09 % (W/V) sodium azide.
Preservative:	Sodium azide
Precaution of Use:	This product contains Sodium azide: a POISONOUS AND HAZARDOUS SUBSTANCE which should be handled by trained staff only.
Storage:	-20 °C
Storage Comment:	Aliquot and store at -20 °C. Avoid repeated freeze/thaw cycles.

Images



Western Blotting

Image 1.