

Datasheet for ABIN3008636

**CPT1A Protein**[Go to Product page](#)**1** Image

## Overview

Quantity:	100 µg
Target:	CPT1A
Origin:	Mouse
Source:	Escherichia coli (E. coli)
Protein Type:	Recombinant
Application:	Western Blotting (WB), SDS-PAGE (SDS), ELISA, Immunoprecipitation (IP)

## Product Details

Characteristics:	Mouse Carnitine Palmitoyltransferase 1A, Liver (CPT1A) Protein
Purity:	> 95 %

## Target Details

Target:	CPT1A
Alternative Name:	Carnitine Palmitoyltransferase 1A, Liver ( <a href="#">CPT1A Products</a> )
Molecular Weight:	50.5 kDa
UniProt:	<a href="#">P97742</a>
Pathways:	<a href="#">AMPK Signaling</a> , <a href="#">Regulation of Lipid Metabolism by PPARalpha</a> , <a href="#">Feeding Behaviour</a> , <a href="#">Monocarboxylic Acid Catabolic Process</a>

## Application Details

Comment: Please note that the majority of this suppliers proteins are partial length rather than full length.  
We recommend customers to inquire.

Restrictions: For Research Use only

## Handling

Format: Liquid

Concentration: 200 µg/mL

Buffer: Prior to lyophilization: 20 mM Tris, 150 mM NaCl, pH 8.0, containing 1 mM EDTA, 1 mM DTT, 0.01 % SKL, 5 % Trehalose and Proclin-300.

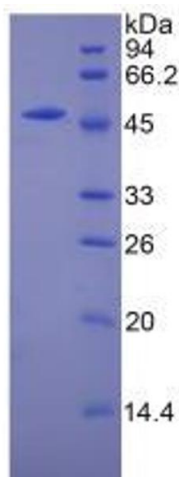
Preservative: Dithiothreitol (DTT), Other preservative, ProClin

Precaution of Use: This product contains ProClin and Dithiothreitol (DTT): POISONOUS AND HAZARDOUS SUBSTANCES which should be handled by trained staff only.

Storage: 4 °C, -80 °C

Storage Comment: Store at 2-8 °C for up to one month. Store at -80 °C for up to one year. Avoid repeated freeze/thaw cycles.

## Images



### SDS-PAGE

**Image 1.** SDS-PAGE analysis of Mouse CPT1A Protein.