

Datasheet for ABIN3008684

CARD9 Protein**1** Image[Go to Product page](#)

Overview

Quantity:	100 µg
Target:	CARD9
Origin:	Mouse
Source:	Escherichia coli (E. coli)
Protein Type:	Recombinant
Application:	Western Blotting (WB), SDS-PAGE (SDS), ELISA, Immunoprecipitation (IP)

Product Details

Characteristics:	Mouse Caspase Recruitment Domain Family, Member 9 (CARD9) Protein
Purity:	> 95 %

Target Details

Target:	CARD9
Alternative Name:	Caspase Recruitment Domain Family, Member 9 (CARD9 Products)
Molecular Weight:	33.8 kDa
UniProt:	A2AIV8
Pathways:	Activation of Innate immune Response

Application Details

Comment:	Please note that the majority of this suppliers proteins are partial length rather than full length.
----------	--

Application Details

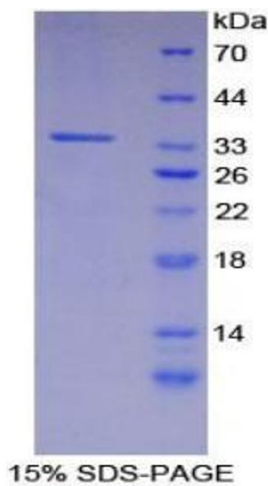
We recommend customers to inquire.

Restrictions: For Research Use only

Handling

Format:	Liquid
Concentration:	200 µg/mL
Buffer:	Prior to lyophilization: PBS, pH 7.4, containing 0.01 % SKL, 1 mM DTT, 5 % Trehalose and Proclin-300.
Preservative:	Dithiothreitol (DTT), ProClin
Precaution of Use:	This product contains ProClin and Dithiothreitol (DTT): POISONOUS AND HAZARDOUS SUBSTANCES which should be handled by trained staff only.
Storage:	4 °C,-80 °C
Storage Comment:	Store at 2-8 °C for up to one month. Store at -80 °C for up to one year. Avoid repeated freeze/thaw cycles.

Images



SDS-PAGE

Image 1. SDS-PAGE analysis of Mouse CARD9 Protein.