

Datasheet for ABIN3008888

**COL4a2 Protein**[Go to Product page](#)**1** Image

## Overview

Quantity:	100 µg
Target:	COL4a2 (COL4A2)
Origin:	Human
Source:	Escherichia coli (E. coli)
Protein Type:	Recombinant
Application:	SDS-PAGE (SDS), Western Blotting (WB), ELISA, Immunoprecipitation (IP)

## Product Details

Characteristics:	Human Collagen Type IV Alpha 2 (COL4a2) Protein
Purity:	> 95 %

## Target Details

Target:	COL4a2 (COL4A2)
Alternative Name:	Collagen Type IV alpha 2 ( <a href="#">COL4A2 Products</a> )
Molecular Weight:	27.6 kDa
UniProt:	<a href="#">P08572</a>

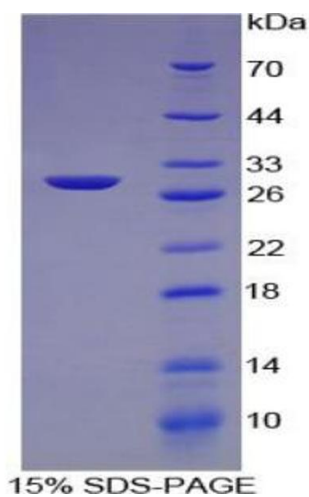
## Application Details

Comment:	Please note that the majority of this suppliers proteins are partial length rather than full length. We recommend customers to inquire.
Restrictions:	For Research Use only

## Handling

Format:	Liquid
Concentration:	200 µg/mL
Buffer:	Prior to lyophilization: 100 mM NaHCO <sub>3</sub> , 500 mM NaCl, pH 8.3, containing 1 mM EDTA, 1 mM DTT, 0.01 % SKL, 5 % Trehalose and Proclin-300.
Preservative:	Dithiothreitol (DTT), Other preservative, ProClin
Precaution of Use:	This product contains ProClin and Dithiothreitol (DTT): POISONOUS AND HAZARDOUS SUBSTANCES which should be handled by trained staff only.
Storage:	4 °C, -80 °C
Storage Comment:	Store at 2-8 °C for up to one month. Store at -80 °C for up to one year. Avoid repeated freeze/thaw cycles.

## Images



### SDS-PAGE

**Image 1.** SDS-PAGE analysis of Human COL4a2 Protein.