

Datasheet for ABIN3008930

**C3 Protein****1** Image[Go to Product page](#)

## Overview

Quantity:	100 µg
Target:	C3
Origin:	Rat
Source:	Escherichia coli (E. coli)
Protein Type:	Recombinant
Application:	Western Blotting (WB), SDS-PAGE (SDS), ELISA, Immunoprecipitation (IP)

## Product Details

Characteristics:	Rat Complement Component 3 (C3) Protein
Purity:	> 95 %

## Target Details

Target:	C3
Alternative Name:	Complement Component 3 ( <a href="#">C3 Products</a> )
Molecular Weight:	40.3 kDa
UniProt:	<a href="#">P01026</a>
Pathways:	<a href="#">Complement System</a> , <a href="#">Regulation of Leukocyte Mediated Immunity</a> , <a href="#">Positive Regulation of Immune Effector Process</a> , <a href="#">Regulation of G-Protein Coupled Receptor Protein Signaling</a>

## Application Details

Comment: Please note that the majority of this suppliers proteins are partial length rather than full length.  
We recommend customers to inquire.

Restrictions: For Research Use only

## Handling

Format: Liquid

Concentration: 200 µg/mL

Buffer: Prior to lyophilization: PBS, pH 7.4, containing 0.01 % SKL, 1 mM DTT, 5 % Trehalose and Proclin-300.

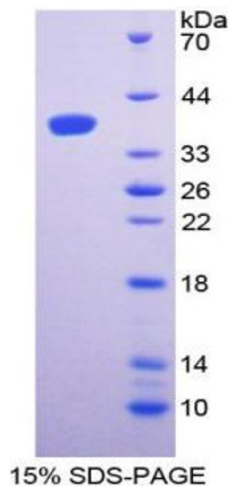
Preservative: Dithiothreitol (DTT), ProClin

Precaution of Use: This product contains ProClin and Dithiothreitol (DTT): POISONOUS AND HAZARDOUS SUBSTANCES which should be handled by trained staff only.

Storage: 4 °C,-80 °C

Storage Comment: Store at 2-8 °C for up to one month. Store at -80 °C for up to one year. Avoid repeated freeze/thaw cycles.

## Images



### SDS-PAGE

**Image 1.** SDS-PAGE analysis of Rat Complement Component 3 Protein.