



[Go to Product page](#)

Datasheet for ABIN3008960

## CD35 Protein

### 1 Image

#### Overview

Quantity:	100 µg
Target:	CD35 (CR1)
Origin:	Human
Source:	Escherichia coli (E. coli)
Protein Type:	Recombinant
Application:	SDS-PAGE (SDS), Western Blotting (WB), ELISA, Immunoprecipitation (IP)

#### Product Details

Characteristics:	Human Complement Receptor 1, Erythrocyte (CR1) Protein
Purity:	> 95 %

#### Target Details

Target:	CD35 (CR1)
Alternative Name:	Complement Receptor 1, Erythrocyte ( <a href="#">CR1 Products</a> )
Molecular Weight:	30.4 kDa
UniProt:	<a href="#">P17927</a>
Pathways:	<a href="#">Complement System</a> , <a href="#">Regulation of Leukocyte Mediated Immunity</a> , <a href="#">Positive Regulation of Endopeptidase Activity</a>

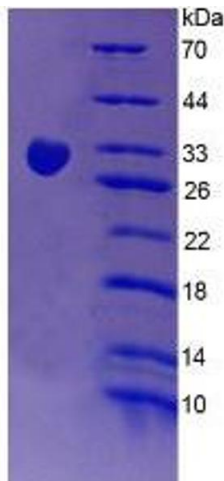
## Application Details

Comment:	Please note that the majority of this suppliers proteins are partial length rather than full length. We recommend customers to inquire.
Restrictions:	For Research Use only

## Handling

Format:	Liquid
Concentration:	200 µg/mL
Buffer:	Prior to lyophilization: 20 mM Tris, 150 mM NaCl, pH 8.0, containing 1 mM EDTA, 1 mM DTT, 0.01 % SKL, 5 % Trehalose and Proclin-300.
Preservative:	Dithiothreitol (DTT), Other preservative, ProClin
Precaution of Use:	This product contains ProClin and Dithiothreitol (DTT): POISONOUS AND HAZARDOUS SUBSTANCES which should be handled by trained staff only.
Storage:	4 °C, -80 °C
Storage Comment:	Store at 2-8 °C for up to one month. Store at -80 °C for up to one year. Avoid repeated freeze/thaw cycles.

## Images



### SDS-PAGE

**Image 1.** SDS-PAGE analysis of Human CR1 Protein.