

Datasheet for ABIN3008980
Connexin 43/GJA1 Protein



[Go to Product page](#)

1 Image

Overview

| | |
|---------------|--|
| Quantity: | 100 µg |
| Target: | Connexin 43/GJA1 (GJA1) |
| Origin: | Human |
| Source: | Escherichia coli (E. coli) |
| Protein Type: | Recombinant |
| Application: | SDS-PAGE (SDS), Western Blotting (WB), ELISA, Immunoprecipitation (IP) |

Product Details

| | |
|------------------|----------------------------------|
| Characteristics: | Human Connexin 43 (CX43) Protein |
| Purity: | > 95 % |

Target Details

| | |
|-------------------|--|
| Target: | Connexin 43/GJA1 (GJA1) |
| Alternative Name: | Connexin 43 (GJA1 Products) |
| Pathways: | MAPK Signaling , Myometrial Relaxation and Contraction , Cell-Cell Junction Organization |

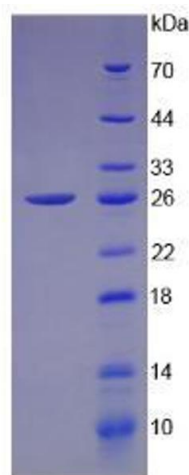
Application Details

| | |
|---------------|--|
| Comment: | Please note that the majority of this suppliers proteins are partial length rather than full length. We recommend customers to inquire. |
| Restrictions: | For Research Use only |

Handling

| | |
|--------------------|---|
| Format: | Liquid |
| Concentration: | 200 µg/mL |
| Buffer: | Prior to lyophilization: 20 mM Tris, 150 mM NaCl, pH 8.0, containing 1 mM EDTA, 1 mM DTT, 0.01 % SKL, 5 % Trehalose and Proclin-300. |
| Preservative: | Dithiothreitol (DTT), Other preservative, ProClin |
| Precaution of Use: | This product contains ProClin and Dithiothreitol (DTT): POISONOUS AND HAZARDOUS SUBSTANCES which should be handled by trained staff only. |
| Storage: | 4 °C, -80 °C |
| Storage Comment: | Store at 2-8 °C for up to one month. Store at -80 °C for up to one year. Avoid repeated freeze/thaw cycles. |

Images



SDS-PAGE

Image 1. SDS-PAGE analysis of Human Connexin 43 Protein.