

Datasheet for ABIN3009008

CRAF Protein

1 Image



[Go to Product page](#)

Overview

Quantity:	100 µg
Target:	CRAF
Origin:	Human
Source:	Escherichia coli (E. coli)
Protein Type:	Recombinant
Application:	SDS-PAGE (SDS), Western Blotting (WB), ELISA, Immunoprecipitation (IP)

Product Details

Characteristics:	Human C-Raf Proto Oncogene Serine/Threonine Protein Kinase (CRAF) Protein
Purity:	> 95 %

Target Details

Target:	CRAF
Alternative Name:	C-Raf Proto Oncogene Serine/Threonine Protein Kinase (CRAF Products)
Molecular Weight:	35.6 kDa
UniProt:	P04049

Application Details

Comment:	Please note that the majority of this suppliers proteins are partial length rather than full length. We recommend customers to inquire.
----------	--

Application Details

Restrictions: For Research Use only

Handling

Format: Liquid

Concentration: 200 µg/mL

Buffer: Prior to lyophilization: 20 mM Tris, 150 mM NaCl, pH 8.0, containing 1 mM EDTA, 1 mM DTT, 0.01 % SKL, 5 % Trehalose and Proclin-300.

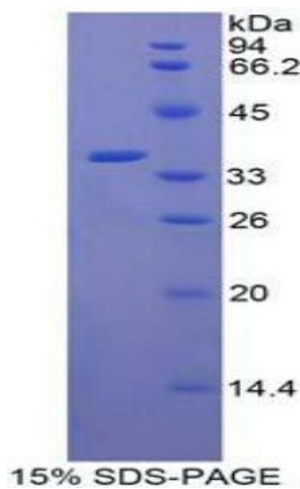
Preservative: Dithiothreitol (DTT), Other preservative, ProClin

Precaution of Use: This product contains ProClin and Dithiothreitol (DTT): POISONOUS AND HAZARDOUS SUBSTANCES which should be handled by trained staff only.

Storage: 4 °C, -80 °C

Storage Comment: Store at 2-8 °C for up to one month. Store at -80 °C for up to one year. Avoid repeated freeze/thaw cycles.

Images



SDS-PAGE

Image 1. SDS-PAGE analysis of Human CRAF Protein.