

Datasheet for ABIN3009027

DCL1 Protein[Go to Product page](#)**1** Image

Overview

Quantity:	100 µg
Target:	DCL1 (CD302)
Origin:	Mouse
Source:	Escherichia coli (E. coli)
Protein Type:	Recombinant
Application:	Western Blotting (WB), SDS-PAGE (SDS), ELISA, Immunoprecipitation (IP)

Product Details

Characteristics:	Mouse C-Type Lectin Domain Family 13, Member A (CLEC13A) Protein
Purity:	> 95 %

Target Details

Target:	DCL1 (CD302)
Alternative Name:	C-Type Lectin Domain Family 13, Member A (CD302 Products)
Molecular Weight:	26.9 kDa
UniProt:	Q9DCG2
Pathways:	Regulation of Actin Filament Polymerization

Application Details

Comment:	Please note that the majority of this suppliers proteins are partial length rather than full length.
----------	--

Application Details

We recommend customers to inquire.

Restrictions: For Research Use only

Handling

Format: Liquid

Concentration: 200 µg/mL

Buffer: Prior to lyophilization: PBS, pH 7.4, containing 0.01 % SKL, 1 mM DTT, 5 % Trehalose and Proclin-300.

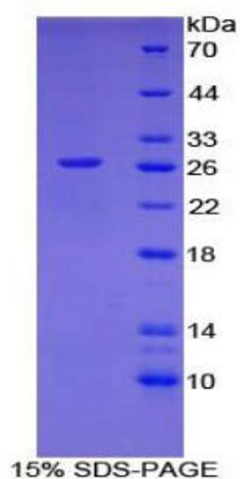
Preservative: Dithiothreitol (DTT), ProClin

Precaution of Use: This product contains ProClin and Dithiothreitol (DTT): POISONOUS AND HAZARDOUS SUBSTANCES which should be handled by trained staff only.

Storage: 4 °C, -80 °C

Storage Comment: Store at 2-8 °C for up to one month. Store at -80 °C for up to one year. Avoid repeated freeze/thaw cycles.

Images



SDS-PAGE

Image 1. SDS-PAGE analysis of Mouse CLEC13A Protein.