



[Go to Product page](#)

Datasheet for ABIN3009085

CTH Protein

1 Image

Overview

Quantity:	100 µg
Target:	CTH
Origin:	Mouse
Source:	Escherichia coli (E. coli)
Protein Type:	Recombinant
Application:	ELISA, Western Blotting (WB), SDS-PAGE (SDS), Immunoprecipitation (IP)

Product Details

Characteristics:	Mouse Cystathionine Gamma Lyase (CSE) Protein
Purity:	> 95 %

Target Details

Target:	CTH
Alternative Name:	Cystathionine gamma Lyase (CTH Products)
Molecular Weight:	26.5 kDa
UniProt:	Q8VCN5
Pathways:	ER-Nucleus Signaling , Warburg Effect

Application Details

Comment:	Please note that the majority of this suppliers proteins are partial length rather than full length.
----------	--

Application Details

We recommend customers to inquire.

Restrictions: For Research Use only

Handling

Format: Liquid

Concentration: 200 µg/mL

Buffer: Prior to lyophilization: 20 mM Tris, 150 mM NaCl, pH 8.0, containing 1 mM EDTA, 1 mM DTT, 0.01 % SKL, 5 % Trehalose and Proclin-300.

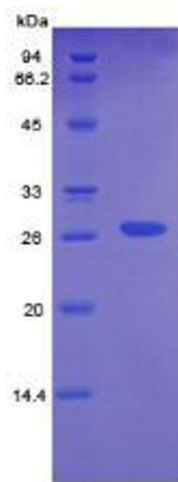
Preservative: Dithiothreitol (DTT), Other preservative, ProClin

Precaution of Use: This product contains ProClin and Dithiothreitol (DTT): POISONOUS AND HAZARDOUS SUBSTANCES which should be handled by trained staff only.

Storage: 4 °C, -80 °C

Storage Comment: Store at 2-8 °C for up to one month. Store at -80 °C for up to one year. Avoid repeated freeze/thaw cycles.

Images



SDS-PAGE

Image 1. SDS-PAGE analysis of Mouse CSE Protein.