



[Go to Product page](#)

Datasheet for ABIN3009212

## EGR1 Protein

### 1 Image

#### Overview

Quantity:	100 µg
Target:	EGR1
Origin:	Mouse
Source:	Escherichia coli (E. coli)
Protein Type:	Recombinant
Application:	Western Blotting (WB), SDS-PAGE (SDS), ELISA, Immunoprecipitation (IP)

#### Product Details

Characteristics:	Mouse Early Growth Response Protein 1 (EGR1) Protein
Purity:	> 95 %

#### Target Details

Target:	EGR1
Alternative Name:	Early Growth Response Protein 1 ( <a href="#">EGR1 Products</a> )
Molecular Weight:	22.2 kDa
UniProt:	<a href="#">P08046</a>
Pathways:	<a href="#">Regulation of Carbohydrate Metabolic Process</a> , <a href="#">Regulation of long-term Neuronal Synaptic Plasticity</a>

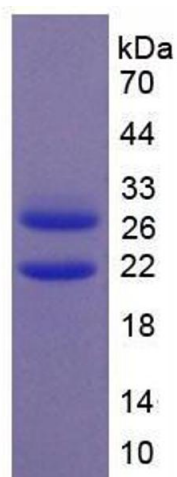
## Application Details

Comment:	Please note that the majority of this suppliers proteins are partial length rather than full length. We recommend customers to inquire.
Restrictions:	For Research Use only

## Handling

Format:	Liquid
Concentration:	200 µg/mL
Buffer:	Prior to lyophilization: 20 mM Tris, 150 mM NaCl, pH 8.0, containing 1 mM EDTA, 1 mM DTT, 0.01 % SKL, 5 % Trehalose and Proclin-300.
Preservative:	Dithiothreitol (DTT), Other preservative, ProClin
Precaution of Use:	This product contains ProClin and Dithiothreitol (DTT): POISONOUS AND HAZARDOUS SUBSTANCES which should be handled by trained staff only.
Storage:	4 °C,-80 °C
Storage Comment:	Store at 2-8 °C for up to one month. Store at -80 °C for up to one year. Avoid repeated freeze/thaw cycles.

## Images



### SDS-PAGE

**Image 1.** SDS-PAGE analysis of Mouse EGR1 Protein.