



[Go to Product page](#)

Datasheet for ABIN3009246

ESM1 Protein

1 Image

Overview

Quantity:	100 µg
Target:	ESM1
Origin:	Rat
Source:	Escherichia coli (E. coli)
Protein Type:	Recombinant
Application:	SDS-PAGE (SDS), Western Blotting (WB), ELISA, Immunoprecipitation (IP)

Product Details

Characteristics:	Rat Endothelial Cell Specific Molecule 1 (ESM1) Protein
Purity:	> 95 %

Target Details

Target:	ESM1
Alternative Name:	Endothelial Cell Specific Molecule 1 (ESM1 Products)
Molecular Weight:	19.3 kDa
UniProt:	P97682
Pathways:	Growth Factor Binding

Application Details

Comment:	Please note that the majority of this suppliers proteins are partial length rather than full length.
----------	--

Application Details

We recommend customers to inquire.

Restrictions: For Research Use only

Handling

Format: Liquid

Concentration: 200 µg/mL

Buffer: Prior to lyophilization: PBS, pH 7.4, containing 0.01 % SKL, 1 mM DTT, 5 % Trehalose and Proclin-300.

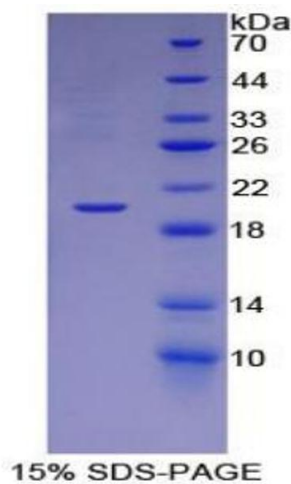
Preservative: Dithiothreitol (DTT), ProClin

Precaution of Use: This product contains ProClin and Dithiothreitol (DTT): POISONOUS AND HAZARDOUS SUBSTANCES which should be handled by trained staff only.

Storage: 4 °C, -80 °C

Storage Comment: Store at 2-8 °C for up to one month. Store at -80 °C for up to one year. Avoid repeated freeze/thaw cycles.

Images



SDS-PAGE

Image 1. SDS-PAGE analysis of Rat ESM1 Protein.