

Datasheet for ABIN3009279

**ECT2 Protein****1** Image[Go to Product page](#)

## Overview

Quantity:	100 µg
Target:	ECT2
Origin:	Human
Source:	Escherichia coli (E. coli)
Protein Type:	Recombinant
Application:	Western Blotting (WB), SDS-PAGE (SDS), ELISA, Immunoprecipitation (IP)

## Product Details

Characteristics:	Human Epithelial Cell Transforming Sequence 2 (ECT2) Protein
Purity:	> 95 %

## Target Details

Target:	ECT2
Alternative Name:	Epithelial Cell Transforming Sequence 2 ( <a href="#">ECT2 Products</a> )
Molecular Weight:	22.8 kDa
UniProt:	<a href="#">Q9H8V3</a>
Pathways:	<a href="#">Neurotrophin Signaling Pathway</a> , <a href="#">Cell-Cell Junction Organization</a>

## Application Details

Comment:	Please note that the majority of this suppliers proteins are partial length rather than full length.
----------	--

## Application Details

We recommend customers to inquire.

Restrictions: For Research Use only

## Handling

Format: Liquid

Concentration: 200 µg/mL

Buffer: Prior to lyophilization: PBS, pH 7.4, containing 0.01 % SKL, 1 mM DTT, 5 % Trehalose and Proclin-300.

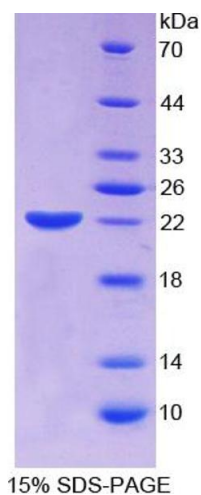
Preservative: Dithiothreitol (DTT), ProClin

Precaution of Use: This product contains ProClin and Dithiothreitol (DTT): POISONOUS AND HAZARDOUS SUBSTANCES which should be handled by trained staff only.

Storage: 4 °C, -80 °C

Storage Comment: Store at 2-8 °C for up to one month. Store at -80 °C for up to one year. Avoid repeated freeze/thaw cycles.

## Images



### SDS-PAGE

**Image 1.** SDS-PAGE analysis of Human ECT2 Protein.