

Datasheet for ABIN3009292

## ESR2 Protein

### 1 Image



[Go to Product page](#)

### Overview

Quantity:	100 µg
Target:	ESR2
Origin:	Mouse
Source:	Escherichia coli (E. coli)
Protein Type:	Recombinant
Application:	SDS-PAGE (SDS), Western Blotting (WB), ELISA, Immunoprecipitation (IP)

### Product Details

Characteristics:	Mouse Estrogen Receptor Beta (ERβ) Protein
Purity:	> 95 %

### Target Details

Target:	ESR2
Alternative Name:	Estrogen Receptor beta ( <a href="#">ESR2 Products</a> )
Molecular Weight:	60.6 kDa
UniProt:	<a href="#">O08537</a>
Pathways:	<a href="#">Nuclear Receptor Transcription Pathway</a> , <a href="#">EGFR Signaling Pathway</a> , <a href="#">Intracellular Steroid Hormone Receptor Signaling Pathway</a> , <a href="#">Steroid Hormone Mediated Signaling Pathway</a> , <a href="#">Regulation of Intracellular Steroid Hormone Receptor Signaling</a>

## Application Details

Comment: Please note that the majority of this suppliers proteins are partial length rather than full length.  
We recommend customers to inquire.

Restrictions: For Research Use only

## Handling

Format: Liquid

Concentration: 200 µg/mL

Buffer: Prior to lyophilization: PBS, pH 7.4, containing 0.01 % SKL, 1 mM DTT, 5 % Trehalose and Proclin-300.

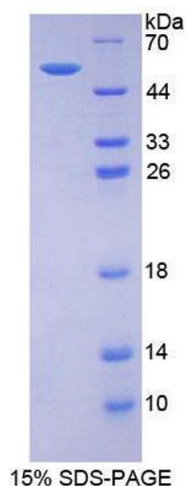
Preservative: Dithiothreitol (DTT), ProClin

Precaution of Use: This product contains ProClin and Dithiothreitol (DTT): POISONOUS AND HAZARDOUS SUBSTANCES which should be handled by trained staff only.

Storage: 4 °C,-80 °C

Storage Comment: Store at 2-8 °C for up to one month. Store at -80 °C for up to one year. Avoid repeated freeze/thaw cycles.

## Images



### SDS-PAGE

**Image 1.** SDS-PAGE analysis of Mouse Estrogen Receptor 2 Protein.