



[Go to Product page](#)

Datasheet for ABIN3009442  
**Fibulin 1 Protein (FBLN1)**

1 Image

### Overview

Quantity:	100 µg
Target:	Fibulin 1 (FBLN1)
Origin:	Rat
Source:	Escherichia coli (E. coli)
Protein Type:	Recombinant
Application:	Western Blotting (WB), SDS-PAGE (SDS), ELISA, Immunoprecipitation (IP)

### Product Details

Characteristics:	Rat Fibulin 1 (FBLN1) Protein
Purity:	> 95 %

### Target Details

Target:	Fibulin 1 (FBLN1)
Alternative Name:	Fibulin 1 ( <a href="#">FBLN1 Products</a> )
Molecular Weight:	20.7 kDa
UniProt:	<a href="#">D3ZQ25</a>

### Application Details

Comment:	Please note that the majority of this suppliers proteins are partial length rather than full length. We recommend customers to inquire.
----------	--------------------------------------------------------------------------------------------------------------------------------------------

## Application Details

Restrictions: For Research Use only

## Handling

Format: Liquid

Concentration: 200 µg/mL

Buffer: Prior to lyophilization: PBS, pH 7.4, containing 0.01 % SKL, 1 mM DTT, 5 % Trehalose and Proclin-300.

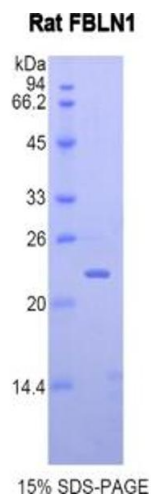
Preservative: Dithiothreitol (DTT), ProClin

Precaution of Use: This product contains ProClin and Dithiothreitol (DTT): POISONOUS AND HAZARDOUS SUBSTANCES which should be handled by trained staff only.

Storage: 4 °C, -80 °C

Storage Comment: Store at 2-8 °C for up to one month. Store at -80 °C for up to one year. Avoid repeated freeze/thaw cycles.

## Images



### SDS-PAGE

**Image 1.** SDS-PAGE analysis of Rat Fibulin 1 Protein.