



[Go to Product page](#)

Datasheet for ABIN3009519

## Galanin Protein (GAL)

### 1 Image

#### Overview

|               |  |
|---------------|--|
| Quantity:     | 100 µg   |
| Target:       | Galanin (GAL)  |
| Origin:       | Mouse  |
| Source:       | Escherichia coli (E. coli)   |
| Protein Type: | Recombinant  |
| Application:  | Western Blotting (WB), SDS-PAGE (SDS), ELISA, Immunoprecipitation (IP) |

#### Product Details

|                  |                             |
|------------------|-----------------------------|
| Characteristics: | Mouse Galanin (GAL) Protein |
| Purity:          | > 95 %                      |

#### Target Details

|                   |  |
|-------------------|--|
| Target:           | Galanin (GAL)  |
| Alternative Name: | Galanin ( <a href="#">GAL Products</a> )                                   |
| Molecular Weight: | 13.5 kDa   |
| UniProt:          | <a href="#">P47212</a>   |
| Pathways:         | <a href="#">Regulation of Hormone Metabolic Process, Feeding Behaviour</a> |

#### Application Details

|          |  |
|----------|--|
| Comment: | Please note that the majority of this suppliers proteins are partial length rather than full length. |
|----------|--|

## Application Details

We recommend customers to inquire.

Restrictions: For Research Use only

## Handling

Format: Liquid

Concentration: 200 µg/mL

Buffer: Prior to lyophilization: PBS, pH 7.4, containing 0.01 % SKL, 1 mM DTT, 5 % Trehalose and Proclin-300.

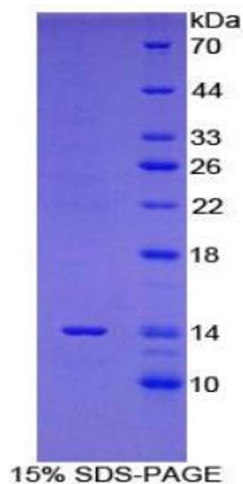
Preservative: Dithiothreitol (DTT), ProClin

Precaution of Use: This product contains ProClin and Dithiothreitol (DTT): POISONOUS AND HAZARDOUS SUBSTANCES which should be handled by trained staff only.

Storage: 4 °C, -80 °C

Storage Comment: Store at 2-8 °C for up to one month. Store at -80 °C for up to one year. Avoid repeated freeze/thaw cycles.

## Images



### SDS-PAGE

**Image 1.** SDS-PAGE analysis of Mouse Galanin Protein.