



Datasheet for ABIN3009706

GREM1 Protein



[Go to Product page](#)

1 Image

Overview

| | |
|---------------|--|
| Quantity: | 100 µg |
| Target: | GREM1 |
| Origin: | Chicken |
| Source: | Escherichia coli (E. coli) |
| Protein Type: | Recombinant |
| Application: | Western Blotting (WB), SDS-PAGE (SDS), ELISA, Immunoprecipitation (IP) |

Product Details

| | |
|------------------|-----------------------------------|
| Characteristics: | Chicken Gremlin 1 (GREM1) Protein |
| Purity: | > 95 % |

Target Details

| | |
|-------------------|--|
| Target: | GREM1 |
| Alternative Name: | Gremlin 1 (GREM1 Products) |
| Molecular Weight: | 24.1 kDa |
| UniProt: | O73755 |
| Pathways: | Regulation of Muscle Cell Differentiation, Tube Formation, Maintenance of Protein Location |

Application Details

| | |
|----------|--|
| Comment: | Please note that the majority of this suppliers proteins are partial length rather than full length. |
|----------|--|

Application Details

We recommend customers to inquire.

Restrictions: For Research Use only

Handling

Format: Liquid

Concentration: 200 µg/mL

Buffer: Prior to lyophilization: PBS, pH 7.4, containing 0.01 % SKL, 1 mM DTT, 5 % Trehalose and Proclin-300.

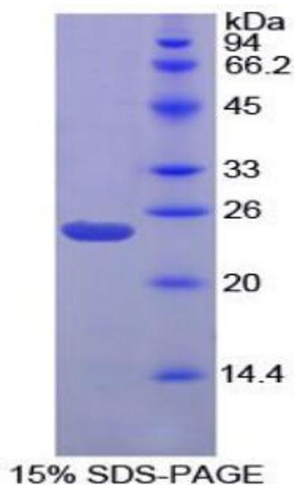
Preservative: Dithiothreitol (DTT), ProClin

Precaution of Use: This product contains ProClin and Dithiothreitol (DTT): POISONOUS AND HAZARDOUS SUBSTANCES which should be handled by trained staff only.

Storage: 4 °C, -80 °C

Storage Comment: Store at 2-8 °C for up to one month. Store at -80 °C for up to one year. Avoid repeated freeze/thaw cycles.

Images



SDS-PAGE

Image 1. SDS-PAGE analysis of Chicken Gremlin 1 Protein.