

## Datasheet for ABIN3009950 INHBB Protein



[Go to Product page](#)

### 1 Image

#### Overview

Quantity:	100 µg
Target:	INHBB
Origin:	Chicken
Source:	Escherichia coli (E. coli)
Protein Type:	Recombinant
Application:	Western Blotting (WB), SDS-PAGE (SDS), ELISA, Immunoprecipitation (IP)

#### Product Details

Characteristics:	Chicken Inhibin Beta B (INHbB) Protein
Purity:	> 95 %

#### Target Details

Target:	INHBB
Alternative Name:	Inhibin beta B ( <a href="#">INHBB Products</a> )
Molecular Weight:	14.3 kDa
UniProt:	<a href="#">P27093</a>
Pathways:	<a href="#">Peptide Hormone Metabolism</a> , <a href="#">Hormone Activity</a> , <a href="#">Negative Regulation of Hormone Secretion</a>

#### Application Details

Comment:	Please note that the majority of this suppliers proteins are partial length rather than full length.
----------	--

## Application Details

We recommend customers to inquire.

Restrictions: For Research Use only

## Handling

Format: Liquid

Concentration: 200 µg/mL

Buffer: Prior to lyophilization: PBS, pH 7.4, containing 0.01 % SKL, 1 mM DTT, 5 % Trehalose and Proclin-300.

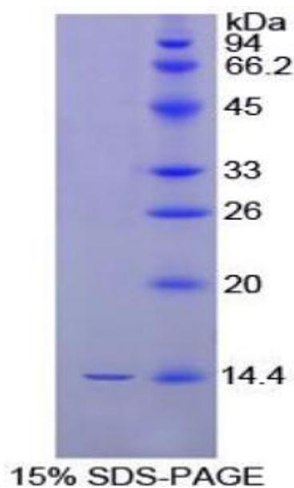
Preservative: Dithiothreitol (DTT), ProClin

Precaution of Use: This product contains ProClin and Dithiothreitol (DTT): POISONOUS AND HAZARDOUS SUBSTANCES which should be handled by trained staff only.

Storage: 4 °C, -80 °C

Storage Comment: Store at 2-8 °C for up to one month. Store at -80 °C for up to one year. Avoid repeated freeze/thaw cycles.

## Images



### SDS-PAGE

**Image 1.** SDS-PAGE analysis of Chicken Inhibin beta B Protein.