

Datasheet for ABIN3009954

INHBE Protein



[Go to Product page](#)

1 Image

Overview

Quantity:	100 µg
Target:	INHBE
Origin:	Human
Source:	Escherichia coli (E. coli)
Protein Type:	Recombinant
Application:	Western Blotting (WB), SDS-PAGE (SDS), ELISA, Immunoprecipitation (IP)

Product Details

Characteristics:	Human Inhibin Beta E (INHbE) Protein
Purity:	> 95 %

Target Details

Target:	INHBE
Alternative Name:	Inhibin beta E (INHBE Products)
Molecular Weight:	14 kDa
UniProt:	P58166
Pathways:	Peptide Hormone Metabolism , Hormone Activity , SARS-CoV-2 Protein Interactome

Application Details

Comment:	Please note that the majority of this suppliers proteins are partial length rather than full length.
----------	--

Application Details

We recommend customers to inquire.

Restrictions: For Research Use only

Handling

Format: Liquid

Concentration: 200 µg/mL

Buffer: Prior to lyophilization: PBS, pH 7.4, containing 0.01 % SKL, 1 mM DTT, 5 % Trehalose and Proclin-300.

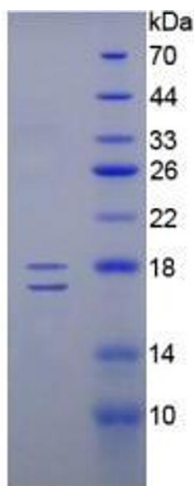
Preservative: Dithiothreitol (DTT), ProClin

Precaution of Use: This product contains ProClin and Dithiothreitol (DTT): POISONOUS AND HAZARDOUS SUBSTANCES which should be handled by trained staff only.

Storage: 4 °C, -80 °C

Storage Comment: Store at 2-8 °C for up to one month. Store at -80 °C for up to one year. Avoid repeated freeze/thaw cycles.

Images



SDS-PAGE

Image 1. SDS-PAGE analysis of Human Inhibin beta E Protein.