

Datasheet for ABIN3010021

**CD11b Protein**[Go to Product page](#)**1** Image

## Overview

Quantity:	100 µg
Target:	CD11b (ITGAM)
Origin:	Rat
Source:	Escherichia coli (E. coli)
Protein Type:	Recombinant
Application:	Western Blotting (WB), SDS-PAGE (SDS), ELISA, Immunoprecipitation (IP)

## Product Details

Characteristics:	Rat Integrin Alpha M (ITGaM) Protein
Purity:	> 95 %

## Target Details

Target:	CD11b (ITGAM)
Alternative Name:	Integrin alpha M ( <a href="#">ITGAM Products</a> )
Molecular Weight:	15.4 kDa
UniProt:	<a href="#">G3V8L7</a>
Pathways:	<a href="#">Apoptosis</a> , <a href="#">Activation of Innate immune Response</a> , <a href="#">Toll-Like Receptors Cascades</a> , <a href="#">Activated T Cell Proliferation</a>

## Application Details

Comment: Please note that the majority of this suppliers proteins are partial length rather than full length.  
We recommend customers to inquire.

Restrictions: For Research Use only

## Handling

Format: Liquid

Concentration: 200 µg/mL

Buffer: Prior to lyophilization: PBS, pH 7.4, containing 0.01 % SKL, 1 mM DTT, 5 % Trehalose and Proclin-300.

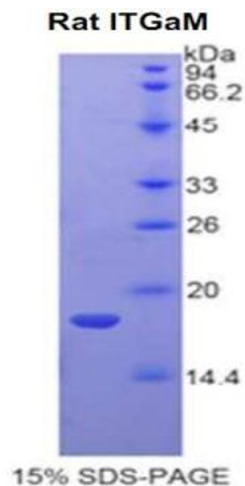
Preservative: Dithiothreitol (DTT), ProClin

Precaution of Use: This product contains ProClin and Dithiothreitol (DTT): POISONOUS AND HAZARDOUS SUBSTANCES which should be handled by trained staff only.

Storage: 4 °C,-80 °C

Storage Comment: Store at 2-8 °C for up to one month. Store at -80 °C for up to one year. Avoid repeated freeze/thaw cycles.

## Images



### SDS-PAGE

**Image 1.** SDS-PAGE analysis of Rat Integrin alpha M (ITGAM) Protein.