



[Go to Product page](#)

Datasheet for ABIN3010029

## Integrin beta 2 Protein (ITGB2)

### 1 Image

#### Overview

Quantity:	100 µg
Target:	Integrin beta 2 (ITGB2)
Origin:	Rat
Source:	Escherichia coli (E. coli)
Protein Type:	Recombinant
Application:	Western Blotting (WB), SDS-PAGE (SDS), ELISA, Immunoprecipitation (IP)

#### Product Details

Characteristics:	Rat Integrin Beta 2 (ITGb2) Protein
Purity:	> 95 %

#### Target Details

Target:	Integrin beta 2 (ITGB2)
Alternative Name:	Integrin beta 2 ( <a href="#">ITGB2 Products</a> )
Pathways:	<a href="#">NF-kappaB Signaling</a> , <a href="#">Activation of Innate immune Response</a> , <a href="#">Toll-Like Receptors Cascades</a> , <a href="#">Activated T Cell Proliferation</a>

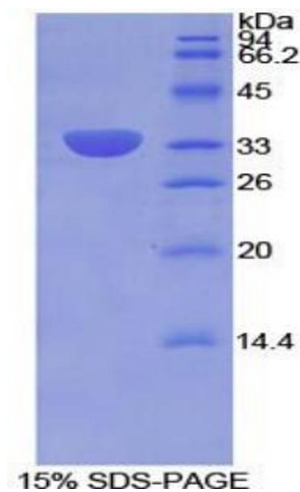
#### Application Details

Comment:	Please note that the majority of this suppliers proteins are partial length rather than full length. We recommend customers to inquire.
Restrictions:	For Research Use only

## Handling

Format:	Liquid
Concentration:	200 µg/mL
Buffer:	Prior to lyophilization: PBS, pH 7.4, containing 0.01 % SKL, 1 mM DTT, 5 % Trehalose and Proclin-300.
Preservative:	Dithiothreitol (DTT), ProClin
Precaution of Use:	This product contains ProClin and Dithiothreitol (DTT): POISONOUS AND HAZARDOUS SUBSTANCES which should be handled by trained staff only.
Storage:	4 °C, -80 °C
Storage Comment:	Store at 2-8 °C for up to one month. Store at -80 °C for up to one year. Avoid repeated freeze/thaw cycles.

## Images



### SDS-PAGE

**Image 1.** SDS-PAGE analysis of Rat Integrin beta 2 Protein.