

Datasheet for ABIN3010451
LRG1 Protein (His-GST)



[Go to Product page](#)

1 Image

Overview

Quantity:	100 µg
Target:	LRG1
Origin:	Mouse
Source:	Escherichia coli (E. coli)
Protein Type:	Recombinant
Purification tag / Conjugate:	This LRG1 protein is labelled with His-GST.
Application:	SDS-PAGE (SDS), Western Blotting (WB)

Product Details

Characteristics:	Mouse Leucine Rich Alpha-2-Glycoprotein 1 (LRG1) Protein
Purity:	> 80%

Target Details

Target:	LRG1
Alternative Name:	Leucine Rich alpha-2-Glycoprotein 1 (LRG1 Products)
Molecular Weight:	53.0 kDa (Predicted Molecular Mass), 53 kDa (Accurate Molecular Mass as determined by SDS-PAGE)
UniProt:	Q91XL1
Pathways:	Brown Fat Cell Differentiation

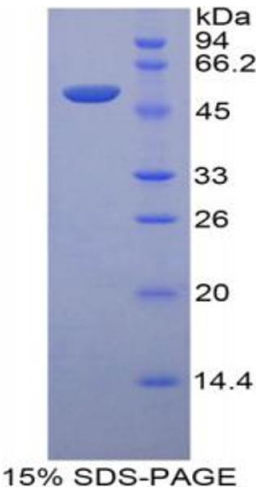
Application Details

Comment:	Please note that the majority of this suppliers proteins are partial length rather than full length. We recommend customers to inquire.
Restrictions:	For Research Use only

Handling

Format:	Lyophilized
Concentration:	50 µg/mL
Buffer:	Prior to lyophilization: PBS, pH 7.4, containing 0.01% Sarcosyl, 5% Trehalose.
Preservative:	Other preservative
Precaution of Use:	This product contains ProClin and Dithiothreitol (DTT): POISONOUS AND HAZARDOUS SUBSTANCES which should be handled by trained staff only.
Storage:	4 °C,-80 °C
Storage Comment:	Store at 2-8 °C for up to one month. Store at -80 °C for up to one year. Avoid repeated freeze/thaw cycles.

Images



SDS-PAGE

Image 1. SDS-PAGE analysis of Mouse LRG1 Protein.