

Datasheet for ABIN3010486

## LAT2 Protein

### 1 Image



[Go to Product page](#)

### Overview

Quantity:	100 µg
Target:	LAT2
Origin:	Rat
Source:	Escherichia coli (E. coli)
Protein Type:	Recombinant
Application:	Western Blotting (WB), SDS-PAGE (SDS), ELISA, Immunoprecipitation (IP)

### Product Details

Characteristics:	Rat Linker For Activation Of T-Cells Family, Member 2 (LAT2) Protein
Purity:	> 95 %

### Target Details

Target:	LAT2
Alternative Name:	Linker For Activation Of T-Cells Family, Member 2 ( <a href="#">LAT2 Products</a> )
Molecular Weight:	22.3 kDa
UniProt:	<a href="#">Q8CGL2</a>
Pathways:	<a href="#">Fc-epsilon Receptor Signaling Pathway</a> , <a href="#">BCR Signaling</a>

### Application Details

Comment:	Please note that the majority of this suppliers proteins are partial length rather than full length.
----------	--

## Application Details

We recommend customers to inquire.

Restrictions: For Research Use only

## Handling

Format: Liquid

Concentration: 200 µg/mL

Buffer: Prior to lyophilization: PBS, pH 7.4, containing 0.01 % SKL, 1 mM DTT, 5 % Trehalose and Proclin-300.

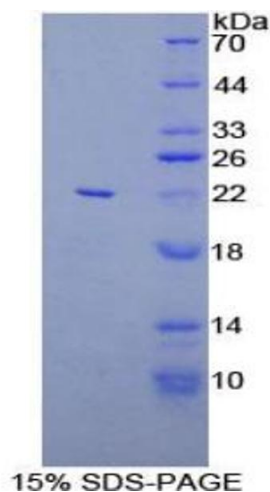
Preservative: Dithiothreitol (DTT), ProClin

Precaution of Use: This product contains ProClin and Dithiothreitol (DTT): POISONOUS AND HAZARDOUS SUBSTANCES which should be handled by trained staff only.

Storage: 4 °C, -80 °C

Storage Comment: Store at 2-8 °C for up to one month. Store at -80 °C for up to one year. Avoid repeated freeze/thaw cycles.

## Images



### SDS-PAGE

**Image 1.** SDS-PAGE analysis of Rat LAT2 Protein.