

Datasheet for ABIN3010570

LOXL3 Protein[Go to Product page](#)**1** Image

Overview

Quantity:	100 µg
Target:	LOXL3
Origin:	Human
Source:	Escherichia coli (E. coli)
Protein Type:	Recombinant
Application:	Western Blotting (WB), SDS-PAGE (SDS), ELISA, Immunoprecipitation (IP)

Product Details

Characteristics:	Human Lysyl Oxidase Like Protein 3 (LOXL3) Protein
Purity:	> 95 %

Target Details

Target:	LOXL3
Alternative Name:	Lysyl Oxidase Like Protein 3 (LOXL3 Products)
Molecular Weight:	27.7 kDa
UniProt:	P58215

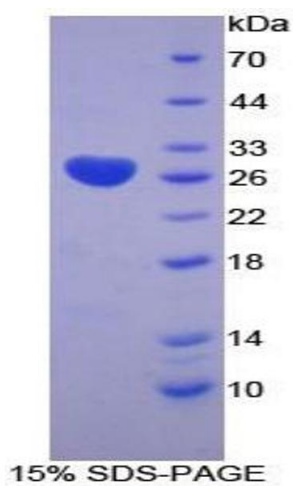
Application Details

Comment:	Please note that the majority of this suppliers proteins are partial length rather than full length. We recommend customers to inquire.
Restrictions:	For Research Use only

Handling

Format:	Liquid
Concentration:	200 µg/mL
Buffer:	Prior to lyophilization: 100 mM NaHCO ₃ , 500 mM NaCl, pH 8.3, containing 1 mM EDTA, 1 mM DTT, 0.01 % SKL, 5 % Trehalose and Proclin-300.
Preservative:	Dithiothreitol (DTT), Other preservative, ProClin
Precaution of Use:	This product contains ProClin and Dithiothreitol (DTT): POISONOUS AND HAZARDOUS SUBSTANCES which should be handled by trained staff only.
Storage:	4 °C, -80 °C
Storage Comment:	Store at 2-8 °C for up to one month. Store at -80 °C for up to one year. Avoid repeated freeze/thaw cycles.

Images



SDS-PAGE

Image 1. SDS-PAGE analysis of Human LOXL3 Protein.