

Datasheet for ABIN3010572

**LOXL4 Protein**[Go to Product page](#)**1** Image

## Overview

Quantity:	100 µg
Target:	LOXL4
Origin:	Human
Source:	Escherichia coli (E. coli)
Protein Type:	Recombinant
Application:	Western Blotting (WB), SDS-PAGE (SDS), ELISA, Immunoprecipitation (IP)

## Product Details

Characteristics:	Human Lysyl Oxidase Like Protein 4 (LOXL4) Protein
Purity:	> 95 %

## Target Details

Target:	LOXL4
Alternative Name:	Lysyl Oxidase Like Protein 4 ( <a href="#">LOXL4 Products</a> )
Molecular Weight:	33.1 kDa
UniProt:	<a href="#">Q96JB6</a>

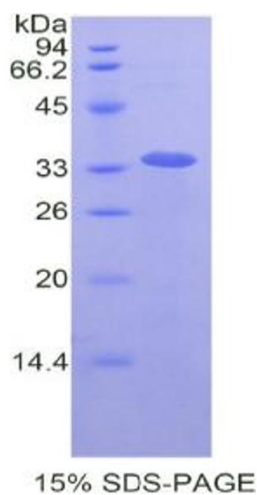
## Application Details

Comment:	Please note that the majority of this suppliers proteins are partial length rather than full length. We recommend customers to inquire.
Restrictions:	For Research Use only

## Handling

Format:	Liquid
Concentration:	200 µg/mL
Buffer:	Prior to lyophilization: 20 mM Tris, 150 mM NaCl, pH 8.0, containing 1 mM EDTA, 1 mM DTT, 0.01 % SKL, 5 % Trehalose and Proclin-300.
Preservative:	Dithiothreitol (DTT), Other preservative, ProClin
Precaution of Use:	This product contains ProClin and Dithiothreitol (DTT): POISONOUS AND HAZARDOUS SUBSTANCES which should be handled by trained staff only.
Storage:	4 °C, -80 °C
Storage Comment:	Store at 2-8 °C for up to one month. Store at -80 °C for up to one year. Avoid repeated freeze/thaw cycles.

## Images



### SDS-PAGE

**Image 1.** SDS-PAGE analysis of Human LOXL4 Protein.