



Datasheet for ABIN3010597  
**Major Basic Protein Protein**



[Go to Product page](#)

1 Image

Overview

Quantity:	100 µg
Target:	Major Basic Protein
Origin:	Human
Source:	Escherichia coli (E. coli)
Protein Type:	Recombinant
Application:	SDS-PAGE (SDS), Western Blotting (WB), ELISA, Immunoprecipitation (IP), Co-Immunoprecipitation (Co-IP)

Product Details

Characteristics:	Human Major Basic Protein (MBP) Protein
Purity:	> 95 %

Target Details

Target:	Major Basic Protein
Abstract:	<a href="#">Major Basic Protein Products</a>
Molecular Weight:	63.8 kDa (Predicted Molecular Mass), 64 kDa (Accurate Molecular Mass as determined by SDS-PAGE)
UniProt:	<a href="#">P13727</a>

Application Details

Comment: Please note that the majority of this suppliers proteins are partial length rather than full length.

## Application Details

---

We recommend customers to inquire.

Restrictions: For Research Use only

## Handling

---

Format: Liquid

Concentration: 200 µg/mL

Buffer: Prior to lyophilization: 20 mM Tris, 150 mM NaCl, pH 8.0, containing 1 mM EDTA, 1 mM DTT, 0.01 % SKL, 5 % Trehalose and Proclin-300.

Preservative: Dithiothreitol (DTT), Other preservative, ProClin

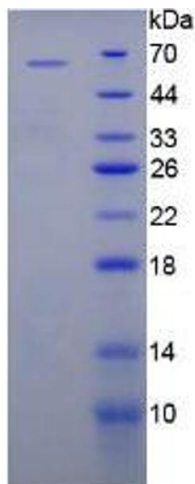
Precaution of Use: This product contains ProClin and Dithiothreitol (DTT): POISONOUS AND HAZARDOUS SUBSTANCES which should be handled by trained staff only.

Storage: 4 °C, -80 °C

Storage Comment: Store at 2-8 °C for up to one month. Store at -80 °C for up to one year. Avoid repeated freeze/thaw cycles.

## Images

---



### SDS-PAGE

**Image 1.** SDS-PAGE analysis of Human PRG2 Protein.