

Datasheet for ABIN3010636

**MMP12 Protein**[Go to Product page](#)**1** Image

## Overview

|               |                                                                        |
|---------------|------------------------------------------------------------------------|
| Quantity:     | 100 µg                                                                 |
| Target:       | MMP12                                                                  |
| Origin:       | Rabbit                                                                 |
| Source:       | Escherichia coli (E. coli)                                             |
| Protein Type: | Recombinant                                                            |
| Application:  | Western Blotting (WB), SDS-PAGE (SDS), ELISA, Immunoprecipitation (IP) |

## Product Details

|                  |                                                    |
|------------------|----------------------------------------------------|
| Characteristics: | Rabbit Matrix Metalloproteinase 12 (MMP12) Protein |
| Purity:          | > 95 %                                             |

## Target Details

|                   |                                                                |
|-------------------|----------------------------------------------------------------|
| Target:           | MMP12                                                          |
| Alternative Name: | Matrix Metalloproteinase 12 ( <a href="#">MMP12 Products</a> ) |
| Molecular Weight: | 22.8 kDa                                                       |
| UniProt:          | <a href="#">P79227</a>                                         |

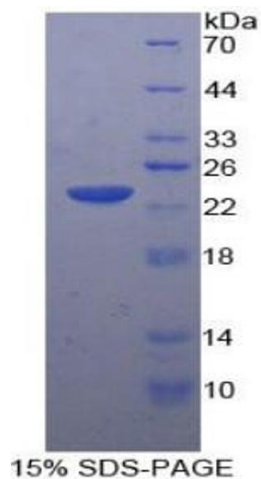
## Application Details

|               |                                                                                                                                            |
|---------------|--------------------------------------------------------------------------------------------------------------------------------------------|
| Comment:      | Please note that the majority of this suppliers proteins are partial length rather than full length.<br>We recommend customers to inquire. |
| Restrictions: | For Research Use only                                                                                                                      |

## Handling

|                    |                                                                                                                                           |
|--------------------|-------------------------------------------------------------------------------------------------------------------------------------------|
| Format:            | Liquid                                                                                                                                    |
| Concentration:     | 200 µg/mL                                                                                                                                 |
| Buffer:            | Prior to lyophilization: PBS, pH 7.4, containing 0.01 % SKL, 1 mM DTT, 5 % Trehalose and Proclin-300.                                     |
| Preservative:      | Dithiothreitol (DTT), ProClin                                                                                                             |
| Precaution of Use: | This product contains ProClin and Dithiothreitol (DTT): POISONOUS AND HAZARDOUS SUBSTANCES which should be handled by trained staff only. |
| Storage:           | 4 °C, -80 °C                                                                                                                              |
| Storage Comment:   | Store at 2-8 °C for up to one month. Store at -80 °C for up to one year. Avoid repeated freeze/thaw cycles.                               |

## Images



### SDS-PAGE

**Image 1.** SDS-PAGE analysis of Rabbit MMP12 Protein.