



Datasheet for ABIN3010680

## MT1 Protein



[Go to Product page](#)

### 1 Image

#### Overview

Quantity:	100 µg
Target:	MT1
Origin:	Human
Source:	Escherichia coli (E. coli)
Protein Type:	Recombinant
Application:	SDS-PAGE (SDS), Western Blotting (WB), ELISA, Immunoprecipitation (IP)

#### Product Details

Characteristics:	Human Metallothionein 1 (MT1) Protein
Purity:	> 95 %

#### Target Details

Target:	MT1
Alternative Name:	Metallothionein 1 ( <a href="#">MT1 Products</a> )
Molecular Weight:	7.6 kDa
UniProt:	<a href="#">P04731</a>
Pathways:	<a href="#">Transition Metal Ion Homeostasis</a>

#### Application Details

Comment:	Please note that the majority of this suppliers proteins are partial length rather than full length.
----------	--

## Application Details

We recommend customers to inquire.

Restrictions: For Research Use only

## Handling

Format: Liquid

Concentration: 200 µg/mL

Buffer: Prior to lyophilization: PBS, pH 7.4, containing 0.01 % SKL, 1 mM DTT, 5 % Trehalose and Proclin-300.

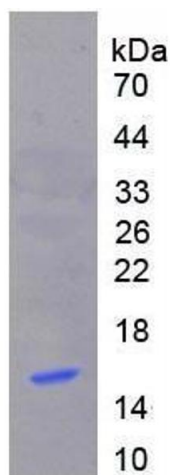
Preservative: Dithiothreitol (DTT), ProClin

Precaution of Use: This product contains ProClin and Dithiothreitol (DTT): POISONOUS AND HAZARDOUS SUBSTANCES which should be handled by trained staff only.

Storage: 4 °C, -80 °C

Storage Comment: Store at 2-8 °C for up to one month. Store at -80 °C for up to one year. Avoid repeated freeze/thaw cycles.

## Images



### SDS-PAGE

**Image 1.** SDS-PAGE analysis of Human Metallothionein 1 Protein.