

Datasheet for ABIN3010972

**NME1 Protein**[Go to Product page](#)**1** Image

## Overview

Quantity:	100 µg
Target:	NME1
Origin:	Mouse
Source:	Escherichia coli (E. coli)
Protein Type:	Recombinant
Application:	SDS-PAGE (SDS), Western Blotting (WB), ELISA, Co-Immunoprecipitation (Co-IP), Immunoprecipitation (IP)

## Product Details

Characteristics:	Mouse Non Metastatic Cells 1, Protein NM23A Expressed In (NME1) Protein
Purity:	> 95 %

## Target Details

Target:	NME1
Alternative Name:	Non Metastatic Cells 1, Protein NM23A Expressed In ( <a href="#">NME1 Products</a> )
Molecular Weight:	19.7 kDa (Predicted Molecular Mass), 20 kDa (Accurate Molecular Mass as determined by SDS-PAGE)
UniProt:	<a href="#">P15532</a>
Pathways:	<a href="#">Apoptosis</a> , <a href="#">Nucleotide Phosphorylation</a> , <a href="#">Carbohydrate Homeostasis</a> , <a href="#">Ribonucleoside Biosynthetic Process</a>

## Application Details

Comment: Please note that the majority of this suppliers proteins are partial length rather than full length.  
We recommend customers to inquire.

Restrictions: For Research Use only

## Handling

Format: Liquid

Concentration: 200 µg/mL

Buffer: Prior to lyophilization: 20 mM Tris, 150 mM NaCl, pH 8.0, containing 1 mM EDTA, 1 mM DTT, 0.01 % SKL, 5 % Trehalose and Proclin-300.

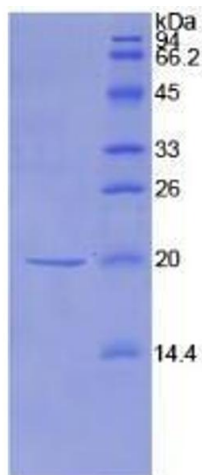
Preservative: Dithiothreitol (DTT), Other preservative, ProClin

Precaution of Use: This product contains ProClin and Dithiothreitol (DTT): POISONOUS AND HAZARDOUS SUBSTANCES which should be handled by trained staff only.

Storage: 4 °C,-80 °C

Storage Comment: Store at 2-8 °C for up to one month. Store at -80 °C for up to one year. Avoid repeated freeze/thaw cycles.

## Images



### SDS-PAGE

**Image 1.** SDS-PAGE analysis of Mouse NME1 Protein.